

*It's time for...*

# Wiltshire

## VISITOR GUIDE



[visitwiltshire.co.uk](http://visitwiltshire.co.uk)

# Explore the Timeless Wonders of Wiltshire



Nowhere else in England boasts such a concentration of captivating iconic sites as Wiltshire. For millennia, travellers have stood in awe of their grandeur and magic.

Are you ready to plan an extraordinary holiday for the upcoming year? If you're considering a staycation, look no further than Wiltshire. Need some convincing?

Wiltshire offers an abundance of space to enjoy. With rolling open countryside and expansive views, the county boasts over 8,000 footpaths, providing endless opportunities to stretch your legs off the beaten track. Maximize your experience of our spacious landscapes by walking, cycling, horseback riding, or even hiring a classic car for a scenic drive in style.

Nowhere else in England can match the concentration of iconic sites found in Wiltshire. For thousands of years, travelers have marvelled at their grandeur and magic. Now, it's your turn to

explore these wonders and experience that same sense of awe by following the Great West Way®. Roughly a quarter of this touring route, stretching from London to Bristol, winds through the breathtaking landscape of Wiltshire. Follow ancient paths once trodden by druids, pilgrims, and drovers. Traverse lush river valleys, rolling chalk hills, ancient woodlands, and picturesque towns and villages. For more details, refer to pages 22-25 of this guide or visit [GreatWestWay.co.uk](http://GreatWestWay.co.uk)

Wiltshire is a realm of timeless wonders, places, pleasures, and nature. Witness morning mists curling around Avebury's stone circles and shadows in the cloisters at Salisbury Cathedral. Explore grand historic houses nestled in 'Capability' Brown parkland and museums brimming with exhibits of national importance. Indulge in delicious local produce from farmers' markets, and partake in authentic festivals and events. Revel in big skies, undulating downland, and Areas of Outstanding Natural Beauty.

When life becomes a bit too fast-paced, take a deep breath. Pause and observe your surroundings. For generations, Wiltshire has been calming and inspiring visitors. A weekend (or longer!) here will replenish what the everyday hustle takes away.

**Visit Wiltshire. Discover Timeless.  
You'll be here in no time.**

## Timeless Places



## Timeless Wonders



## Timeless Pleasures



## Timeless Nature



Front Cover Photos: Stourhead, Vale of Pewsey, Three Dagers

# Contents

### Timeless Places

This Way for a Journey Through Time	4
Timeless Elegance Amidst	
Wiltshire's Splendour	6
A Rich Industrial	
Heritage Brought to Life	8
Salisbury - Layer upon layer of history	10
Wiltshire's Towns and Villages	12
Hands-on Heritage	16
Wiltshire's Wildlife Marvels	18
Wiltshire On Screen Unveiled	20

### Discover the Great West Way®

Great West Way®	22
Wiltshire on the Great West Way®	24

### Timeless Wonders

Unique and Unforgettable	26
<b>Timeless Pleasures</b>	
Seasonal Celebrations	28
Take Time Out	30
Wiltshire on a Budget	32
What's in Store...	34
A Wiltshire Culinary Journey	36
Rejuvenate & De-stress	38
Send Your Heart Rate Soaring	40

### Timeless Nature

Year Round Delights	42
Perfect for Outdoor Escapades	44
Discover the Tranquil Beauty of Wiltshire	46

### Where to Stay

Sleep Soundly and Wake Refreshed	48
Go Green in Wiltshire	50
Accommodation	52

### Places to Visit & Things to Do

Attractions	54
Three Days in Wiltshire	65

### General Information

Getting Here is Easy	66
Disabled Access	66
Find the Perfect Place to Stay	66
Information Centres	66
Map of Wiltshire	67

## Wiltshire at Your Fingertips

Go to [visitwiltshire.co.uk/videos](http://visitwiltshire.co.uk/videos) to view our inspirational series of Wiltshire films. For all the latest information on special offers, competitions and more, visit our website and sign up for our newsletter today!

**Get Social** Share your Wiltshire stories using [#timeforwiltshire](https://twitter.com/visitwiltshire)



Avebury at Sunrise



Amesbury Ancestor



Old Wardour Castle



Old Sarum



Hang Gliders over Alton Barnes White Horse

# This Way for a Journey Through Time

Wiltshire has been a special place for a very long time and our World Heritage Site stands testament to the ages. The ancient standing stones at Stonehenge and Avebury have a magnetism that has drawn people to them for centuries. But history in Wiltshire is not just ancient.

People have been drawn to Wiltshire since ancient times. Reaching back to the Stone Age and beyond, the county's archaeological inheritance is second to none. Our prehistoric henge monuments at Stonehenge and Avebury are renowned throughout the world. But they are only part of the story. Later inhabitants have left their mark as well, bequeathing tangible links with the past.

Built for defence and characterised by enormous ditches and banks, Iron Age hillforts are a recurring feature of the Wiltshire landscape. Visit at sunrise or sunset. Pause for a while on the ramparts.

See how the atmosphere alters with the light and reflect on the generations who have stood in this very spot before you – these are the ideal places to connect with our ancestors. The best known can be found at Old Sarum on the northern outskirts of Salisbury. This massive earthwork began life as a Neolithic community some 5,000 years ago. Subsequently inhabited by Romans, Saxons and Normans, it developed into a flourishing medieval settlement, eventually becoming the original city of Salisbury. Today you can stroll among the ruins of a royal palace, a castle, and no less than two earlier cathedrals.

Other Wiltshire hillforts include Barbury Castle on the North Wessex Downs. Battlesbury Camp, one of the best preserved in the county. Bratton Castle, home to an even older Neolithic long barrow. Cley Hill, Britain's UFO capital, with hundreds of sightings since the mid-1960s. Oldbury Castle, overlooking the Cherhill White Horse. For further inspiration, view our ancient hillforts film: [visitwiltshire.co.uk/videos](http://visitwiltshire.co.uk/videos)

“Here you can touch and feel the past.”

Elsewhere, the legacy of the past continues. Ludgershall Castle was built as a fortress in the late 11th century – once a royal hunting lodge, it is now a glorious ruin. The beautiful 12th century Abbey at Malmesbury contains the tomb of Athelstan, first king of all England, who made this historic town his capital. Old Wardour Castle, dating from the 14th century, was badly damaged in the English Civil War, but today provides a picturesque lakeside setting for picnics.

To unearth the secrets of Wiltshire's journey through the ages, team up with an expert tour guide. Or explore the galleries at our award-winning museums, bursting with treasured exhibits of outstanding national importance. The Salisbury Museum is home to one of Europe's most extensive collections of Stonehenge and prehistoric artefacts. Here you can discover the Monkton Deverill Gold Torc, recovered from a Bronze Age burial mound, and the grave of the 'Amesbury Archer', the richest Beaker burial in Britain. Galleries at Wiltshire Museum

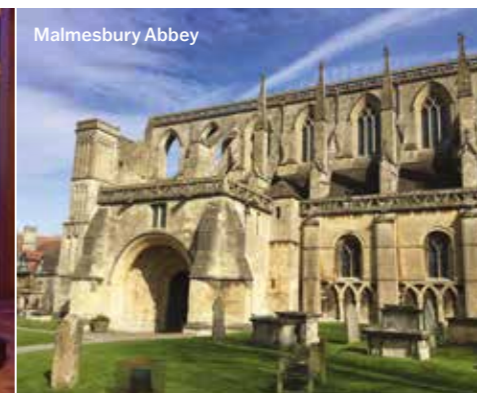
in Devizes cover 500,000 years of Wiltshire's history, including the Neolithic, Bronze Age and Iron Age eras, as well as Roman, Saxon and Medieval times. The displays of 'Gold from the Time of Stonehenge' feature remarkable finds excavated from the prehistoric landscapes of the World Heritage Site.

For further evidence of Roman occupation in Wessex you need look no further than the Roman Baths in Bath, home to the Sacred Spring, the Roman Temple, the Roman Bath House and finds from Roman Bath. Amesbury, on the southern edge of Salisbury Plain, is the nearest town to Stonehenge and close to the ancient monuments of Woodhenge, the Cursus, the Avenue and Durrington Walls. Recent excavations suggest that the town may date back more than 10,000 years.

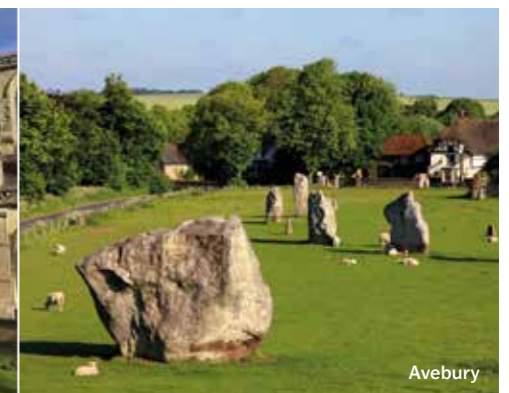
The Amesbury History Centre tells the story behind Amesbury's unique heritage, its connections to Stonehenge and the origins of its rise to military importance may date back more than 10,000 years.



Salisbury Museum



Malmesbury Abbey



Avebury



“  
Find peace and  
tranquillity.  
”



Bowood House



Longleat House



Lacock Abbey



Larmer Tree



American Museum & Gardens

# Timeless Elegance Amidst Wiltshire's Splendour

Nestled against the backdrop of Wiltshire's breathtaking landscapes, the grand estates of this county seamlessly blend magnificent residences with equally remarkable grounds. Wiltshire boasts an array of stately homes, each a testament to architectural brilliance and natural beauty.



Click for Iford Manor Gardening Tips

**Longleat House**, a splendid example of high Elizabethan architecture, stands as a crown jewel among these grand country properties. **Bowood**, an impressive 18th-century estate with interiors designed by Robert Adam, exudes timeless grandeur. The influence of the legendary horticultural genius Lancelot 'Capability' Brown is evident in the awe-inspiring pastoral settings that surround these estates, including the grounds of **Lacock Abbey**, founded in the 13th century.

Wiltshire's green-fingered legacy extends beyond Brown, with Henry 'The Magnificent' designing the captivating National Trust garden at **Stourhead** in the 18th century. This living work of art features classical temples and grottoes reflected in a spectacular lake, surrounded by rare and exotic trees. Stourhead House,



Stourhead



Iford Manor Gardens

a Palladian mansion, welcomes visitors from March to October and during the festive season.

Smaller yet equally enchanting homes showcase the influence of notable designers. **Avebury Manor** reflects Tudor, Queen Anne, Georgian, Victorian, and 20th-century styles, while the romantic Italianate terraces of **Iford Manor Gardens** transport visitors to an Edwardian version of Tuscany.

Within Salisbury Cathedral Close, the walled gardens of **Mompesson House** and **'The Wardrobe'** offer peace and tranquillity amidst the bustling city. **The Hall**, a Jacobean town house in Bradford on Avon, preserves the legacy of the Moulton family, introducing vulcanized rubber to England.

Venturing beyond Wiltshire's borders, **Westonbirt Arboretum** in Gloucestershire boasts 600 acres with a world-renowned collection of temperate trees and shrubs. **Kelmscott Manor**, recently reopened after extensive renovations, unveils the Grade I listed house and enchanting riverside gardens that once served as the Cotswold retreat of William Morris, a pioneering figure in the Arts and Crafts movement. Explore these timeless havens, where history, architecture, and nature converge in harmonious splendour.

# A Rich Industrial Heritage Brought to Life

The source of many Wiltshire towns' modern-day prosperity lies in the production of woollen broadcloth in centuries past. Apart from Wilton Carpets – which has been trading on the same site in the former capital of Wessex for more than 300 years – the textile industry is long gone. But outstanding examples of industrial architecture remain to provide tangible links with the past.

Back in its textile manufacturing heyday, Bradford on Avon was home to more than 30 cloth factories. Today, the towering walls of Abbey Mill still flank the river, while the cottages once inhabited by spinners and weavers can be seen clinging to the hillside above. In Trowbridge the history of weaving dates back over 1,000 years. The result is an important architectural legacy ranging from the late-16th to the mid-19th century. Trowbridge Museum, following extensive renovation and expansion, has a fascinating collection relating to West Country woollen cloth production, including interactive exhibits, sensory experiences and working looms.

The Hall is a hidden gem in central Bradford on Avon. Historically significant for its connection to the industrial trade, it has had a variety of purposes including that of a family home, a storage space for wool, accommodation for factory workers, and an officer's mess.

For much of its 87-mile course, the beautifully restored Kennet & Avon Canal runs through Wiltshire. During the Industrial Revolution it was a key means of transport for goods and materials. Today it makes a peaceful and unhurried way to enjoy the county's timeless scenery. Colourful narrowboats are the traditional way to travel. But you can also walk or cycle

along the towpath. Try your hand at stand-up paddleboarding. Or take to the water in a canoe.

In the course of your journey along and around the canal you will come across outstanding examples of industrial archaeology. Pay a visit to Crofton Beam Engines, just outside Marlborough – 200 years old, yet still capable of performing their original job. Nearby Wilton Windmill, the only working windmill in Wessex, where you can buy a bag of Wiltshire flour to take home. Or the flight of 29 locks at Caen Hill on the edge of Devizes – an astonishing feat of engineering. For further inspiration, view our Kennet & Avon Canal film here: [visitwiltshire.co.uk/videos](http://visitwiltshire.co.uk/videos).

In 1840 Isambard Kingdom Brunel chose to site the factory for his Great Western Railway in Swindon. Today, the Grade II listed buildings of the former railway works make a fitting home for STEAM Museum of the Great Western Railway. Here you can step back in time, try out the interactive exhibits, and discover the story of this iconic line. For the chance to actually ride aboard a vintage steam train, head for Swindon & Cricklade Railway.

Wiltshire's local museums offer further links with the past. Athelstan Museum in Malmesbury traces the history of lacemaking. Chippenham Museum highlights aspects of trade and industry, including a working model of a flourmill. While displays at Royal Wootton Bassett Museum depict the town's social, rural, commercial and industrial history. Wiltshire has long been renowned for its local ales and, happily for us, one industry that does survive to this day is brewing. Founded in 1875, Wadworth Brewery has moved from its original home to a new state of the art brewing facility in Folly Road in Devizes.

Wiltshire is blessed with a number of smaller breweries dotted around the county including Stone Daisy Brewery in the Fonthill Estate.



STEAM Museum of Great Western Railway



Bradford on Avon



Wilton Windmill



Wadworth Beers



Stone Daisy Brewery



Crofton Beam Engine



Kennet and Avon Canal



Trowbridge Museum

# Layer upon layer of history...



Salisbury is a city of ageless beauty and captivating history, where medieval magnificence meets contemporary culture.

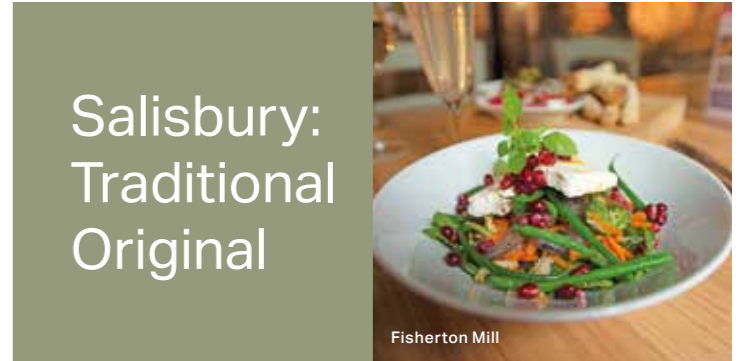


At its heart is **Salisbury Cathedral**, a beacon which has attracted travellers for hundreds of years. Gathered around it is an inspiring city, alive with fascinating people, places and experiences. Salisbury's story reaches back through the centuries and the city is proud of this rich heritage. Yet it is no stranger to original thinking.

Within the Cathedral Close discover finds from Stonehenge at **The Salisbury Museum**. Relive scenes from *Sense and Sensibility* at the National Trust's **Mompesson House**. Delve into the history of two local regiments at **The Rifles Berkshire & Wiltshire Museum**. A short stroll along the High Street takes you to the **Parish Church of St Thomas** with its magnificent Doom Painting. On the outskirts of the city, you'll find **Old Sarum**, the original site of Salisbury, and **River Bourne Community Farm**. While **Boscombe Down Aviation Collection**, **Salisbury Racecourse** and, of course, **Stonehenge** are right on the doorstep too.

Traditionally English with an independent spirit, the city's living heritage and lively culture rewards repeated visits. It is a creative and independent hub which has captivated visitors and inspired innovation for hundreds of years.

When it's time for a break you'll find tempting tearooms and coffee shops, family-friendly brasseries and romantic tables-for-two, cosy city pubs and historic inns with views of the river. **Fisherton Mill** offers an award winning café with mouthwatering treats on offer and the Mill also hosts the largest independent art gallery in the South West with a huge selection of artisan crafts, jewellery and homewares.



For more information on things to do in Salisbury, please click on the video links below.



My Salisbury



12 Things to See and Do at Salisbury Cathedral

Shoppers can head for their favourite high street stores. Or seek out quirky, independent shops offering products designed and crafted locally. For hustle and bustle you can't beat a good market, and Salisbury is blessed with markets in abundance. A magnet for traders and shoppers alike, the Charter Market has been drawing people to the city – every century, every year, every week, every Tuesday\* and Saturday – for almost 800 years. Throughout the year the Market Place and Guildhall Square are also home to artisan, teenage and vintage markets. Farmers' and Foodie Friday markets. Continental markets and an ever-popular Christmas Fayre.

**Salisbury Art Scene** hold a monthly event in the Market Square (March to December) to showcase the skills and works from local artists.

Salisbury's engaging cultural scene reflects the city's deep-rooted creativity and imagination. Under the banner of **Wiltshire Creative**, Salisbury Playhouse, Salisbury Arts Centre and Salisbury International Arts Festival embrace the contemporary, the traditional and the – occasionally – somewhat eccentric. Resulting in a vibrant blend of music, dance, theatre, comedy and more.

Just 90 minutes by train from London Waterloo, Salisbury makes an unbeatable destination for day trips and short breaks alike. It is also an excellent base for discovering all that Wiltshire has to offer. For a comprehensive guide to the city and surrounding areas go to [visitsalisbury.co.uk](http://visitsalisbury.co.uk)

**Salisbury, welcoming visitors since 1227. Become part of our story.**



\*Except the third Tuesday in October

# Wiltshire's Towns and Villages

*The home of timeless experiences*

**Wiltshire's historic towns and villages are friendly, relaxed and welcoming.**

Each with something unique to offer. Stylish independent shops and colourful markets. Great entertainment. Fascinating history and heritage. Tempting pubs and restaurants. In all four corners of the county you'll find an excellent range of accommodation to suit every budget. So come and spend time in Wiltshire: the England you love in one county. For a full list of towns please go to [www.visitwiltshire.co.uk/explore/towns](http://www.visitwiltshire.co.uk/explore/towns)

**EVCP** Electric Vehicle Charging Points  
➔ Railway Station

## Amesbury

It's hard to imagine what life would have been like over 10,000 years ago, but Amesbury has a history dating back to 8,820BC. Nowadays it offers free parking, a weekly market, restaurants, inns and independent shops. Nestling in a loop of the meandering River Avon, the town is close to the ancient wonders of Stonehenge and Woodhenge.

**EVCP:** Main car park in Amesbury on the A345.  
[www.amesburytowncouncil.gov.uk](http://www.amesburytowncouncil.gov.uk)

## Bradford on Avon ➔

This stunning town flanks both sides of the peaceful River Avon at the southern end of the Cotswolds, with the Kennet & Avon Canal also running through it. Steeped in history, it boasts spectacular medieval barns, Saxon and Norman churches, imposing mansions and a rich industrial heritage, which means this town is definitely not one to be missed!

[www.bradfordonavon.co.uk](http://www.bradfordonavon.co.uk)



Hackpen Hill

## Calne

Calne is a small vibrant town with so much to discover. You can explore our history at the Calne Heritage Centre. Join the annual Calne Bike Meet which brings motorcyclists and the community together on 29 July 2023 or plan a visit to the Atwell Wilson Motor Museum. Spend a day cycling or walking along National Cycle route 403 and visit the nearby Cherhill White Horse. With two hours free parking in the Heritage Quarter, take an opportunity to appreciate the flourishing past and present of our beautiful town and shop, eat, drink and relax.

[www.visitcalne.co.uk](http://www.visitcalne.co.uk)

## Castle Combe

The perfect English hamlet. Arguably 'the prettiest village in England'. Also a location scout's favourite, featuring regularly on the big screen in films such as *Stardust*, *The Wolf Man* and *War Horse*. In short, unmissable.

## Chippenham ➔

This busy market town has much to recommend it. Modern shopping centres and a wealth of historic buildings. The Neeld Community and Arts Centre, Chippenham Museum, and Wiltshire & Swindon History Centre. John Coles Park and the River Avon, which forms a peaceful backdrop for walking and cycling. Lacock, Castle Combe and major attractions including Bowood are nearby.

[www.chippenham.gov.uk](http://www.chippenham.gov.uk)

## Corsham

Corsham developed from Saxon origins into a prosperous town thanks to the wool trade and the quarrying of golden Bath stone. Home to quirky independent shops, the historic High Street contains properties from the 16<sup>th</sup>, 17<sup>th</sup> and 18<sup>th</sup> centuries, with the 350-year-old Almshouses at one end and stately Corsham Court at the other. The town starred, as Truro, in BBC One's *Poldark*.

**EVCP:** Post Office Lane (Long-Stay) Car Park.  
[www.corsham.gov.uk/visit](http://www.corsham.gov.uk/visit)

## Cricklade

Lying at the southern gateway to the Cotswold Water Park is the first town on the River Thames. An historic Saxon town with over 100 listed buildings, including the medieval St Sampson's Church. There is free parking with opportunities to shop, eat and drink as you stroll around the Heritage Trail, explore North Meadow Nature Reserve or walk parts of the Thames Path.

**EVCP:** Fairview Fields Car Park - just off the A419 by the rugby club. Cricklade Leisure Centre, Stones Lane.

[www.crickladetowncouncil.gov.uk](http://www.crickladetowncouncil.gov.uk)

### Devizes

This historic market town has a colourful medieval past and a rich heritage of Georgian houses. The town has kept its character, with many small, family-run businesses and a traditional market bustling with fresh food, crafts and curios. Home to both the Wiltshire Museum and Wadworth Brewery, Devizes stands on the Kennet & Avon Canal, near the flight of 29 locks at Caen Hill. [www.devizes-tc.gov.uk](http://www.devizes-tc.gov.uk)



### Lacock

A stunning National Trust village. Here, cottages and inns dating back to the 15th century have formed a breathtaking backdrop to many film and TV classics, from Wolf Hall and Pride and Prejudice to Harry Potter.

### Ludgershall

Were you to delve into the Domesday Book of 1086 you would find a listing for this small town on the eastern edge of Salisbury Plain. Dating from the late 11th century, Ludgershall Castle was originally a royal hunting lodge; today its ruins are in the care of English Heritage. From the castle grounds there are splendid views, and local walks to nearby Collingbourne Woods. [www.ludgershall-tc.gov.uk](http://www.ludgershall-tc.gov.uk)



### Malmesbury

This vibrant market town is believed to be the country's oldest borough and the one-time capital of England. There is much to delight and discover, including the stunning 12th century Abbey, Abbey House Gardens and river walks along the Avon. The High Street offers unique shops, cafés, restaurants and a regular market at the 15th century Market Cross. **EVCP:** 2 devices and 4 connectors at Aldi, SN16 9JL. [www.malmesbury.gov.uk](http://www.malmesbury.gov.uk) [www.discovermalmesbury.life](http://www.discovermalmesbury.life)



Vale of Pewsey



### Marlborough

Set in beautiful countryside, this handsome former staging post has evolved into a stylish and cosmopolitan town with its own thriving café culture. With a twice-weekly market, the wide High Street is lined with characterful old buildings housing an array of high quality shops, pubs and restaurants. Don't forget to explore the side streets, riverside parks and green spaces too. [www.marlborough-tc.gov.uk/visitors](http://www.marlborough-tc.gov.uk/visitors)



### Trowbridge

A Magna Carta Baron town. Unique industrial architecture and a superb museum showcase its rich past as a centre for woollen cloth production. Today it boasts a vibrant heritage and arts scene, quality markets, independent retailers, family restaurants, a cinema and a Premier Inn. **EVCP:** Cradle Bridge Retail Park, County Way; Lovemead Car Park, Duke Street; Bythesea Road; 94 Newtown; 110-122 Bythesea Road; 32-33 Bythesea Road; 6 Station Approach; County Way; 12 Westbury Road. [www.trowbridge.gov.uk](http://www.trowbridge.gov.uk)



### Vale of Pewsey

White horses, ancient downland and the Kennet & Avon Canal make this a great base for walking, cycling and riding. You'll find thatched cottages, peaceful villages and places to eat, drink and shop, as well as Pewsey Heritage Centre, Crofton Beam Engines, Wilton Windmill and the Crop Circle Exhibition. Mainline railway stations at Great Bedwyn and Pewsey. Walkers are Welcome accredited. [www.visitpewseyvale.co.uk](http://www.visitpewseyvale.co.uk)



### Warminster

A historic market town packed with listed buildings and a variety of independent shops, cafés, restaurants and inns. Head to Lake Pleasure Grounds for the skatepark, the pavilion café, play areas, boating lake and more, or enjoy Smallbrook Meadows Nature Reserve. Longleat and Stourhead are nearby, with excellent transport links to Bath and Salisbury. **EVCP:** Morrisons Car Park, BA12 9NT x2; Central Car Park, BA12 9BP x2; Longbridge Service Station, BA12 7DS x2. [www.warminster-tc.gov.uk](http://www.warminster-tc.gov.uk)



“  
The story  
of military  
communications,  
from semaphore  
to cyber.  
”



REME Museum



The Army Flying Museum



Atwell-Wilson Motor Museum



Boscombe  
Down Aviation  
Collection



The Rifles Berkshire & Wiltshire Museum



Royal Signals Museum

# Hands-on Heritage

## *Vehicles, aircraft and the armed forces*

Embark on a nostalgic journey through time at the **Atwell-Wilson Motor Museum** in Calne, where the allure of iconic cars from yesteryear awaits your touch. This hands-on experience offers a captivating glimpse into motoring history, featuring automobiles dating back to 1910, along with motorcycles, mopeds, bicycles, and a meticulously reconstructed 1930s-style garage. The museum also houses a diverse collection, including model lorries and a treasure trove of motoring memorabilia.

Delve into the rich tapestry of Britain's armed forces at various museums across Wiltshire, each meticulously chronicling the endeavours and ingenuity of different corps and regiments.

In the heart of Salisbury's Cathedral Close, **The Rifles Berkshire & Wiltshire Museum** unfolds the heroic saga of local infantry regiments from 1748 to the present day. This immersive experience goes beyond captivating photographs to showcase documents, medals, uniforms, weaponry, and even a cannonball from the American War of Independence.

Discover the evolution of battlefield communications at the **Royal Signals Museum** near Blandford Forum. Journey from the introduction of the telegraph during the Crimean War to the

realms of espionage, satellites, and the digital battlefields of cyberspace. Interactive exhibits breathe life into history, allowing visitors to send Morse code messages, set up radio and satellite networks, and navigate a virtual world in a full-size truck.

**The REME Museum** in Lyneham, a noteworthy addition to Wiltshire's heritage landscape since 2017, is dedicated to preserving the legacy of the Royal Electrical and Mechanical Engineers. With a vast collection exceeding 100,000 items, including military vehicles, medals, weapons, and uniforms, the museum paints a comprehensive picture of the regiment's history through the ages.

**St. Michael's Church**, with strong ties to RAF Lyneham, showcases a unique window commemorating the RAF Lyneham 50th anniversary and the 47 Squadron window inspired by the squadron's badge and motto.

For a captivating exploration of British soldiers in the air, the **Army Flying Museum** at Middle Wallop near Salisbury is a must-visit. Housing over 40 fixed-wing and rotary aircraft in two expansive hangars, the museum spans a century of aviation, from balloons and kites to modern-day helicopter operations.

At the **Boscombe Down Aviation Collection** near Salisbury, a working museum housed in a historic World War One hangar, the history of test flight in the UK comes to life. With over 100 exhibits, including 30 aircraft, visitors can sit in cockpits, don flight suits and helmets, and witness ongoing restoration efforts on real aircraft. Immerse yourself in Wiltshire's hands-on heritage, where vehicles, aircraft, and armed forces converge to tell compelling stories of the past.

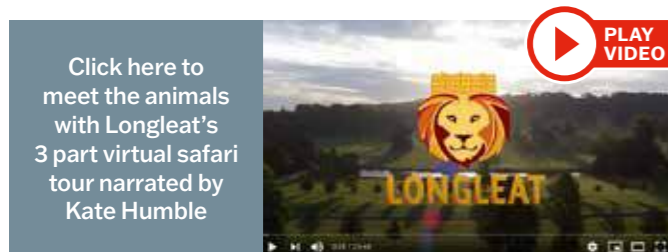




Cholderton Rare Breeds Farm



“  
Go on safari  
Wiltshire style!  
”



# Wiltshire's Wildlife Marvels

In a county renowned for its breathtaking natural beauty, Wiltshire boasts an abundance of indigenous wildlife, along with some surprising exotic inhabitants.

Venture into the enchanting world of **Longleat**, home to England's first Safari Park outside of Africa. Amidst the grandeur of the Elizabethan house and the expansive 'Capability' Brown parkland, encounter lions, lemurs, and lorikeets. Marvel at the Koala Creek, where England's only koalas reside in a purpose-built, walk through habitat. Take a Jungle Cruise, observe the wolf pack in Wolf Wood, hand-feed sea lions and giraffes, and immerse yourself in Longleat's diverse range of seasonal events, from concerts to spooky Halloween fun and the Festival of Lights.

For those seeking a more intimate animal encounter, explore smaller animal parks with activities tailored for young children. Delight in handling rabbits, stroking lambs, and enjoying tractor and trailer rides. Exciting indoor and outdoor play areas offer the perfect outlet for youthful energy, with each animal park boasting its unique features.

**Cholderton Rare Breeds Farm Park** promises peak-time pig races and a variety of engaging animal activities, including

Alpaca Walks. Experience a working farm and rural life at **River Bourne Community Farm**, where you can meet and hand-feed an array of animals, explore 53 acres of water-meadow, and follow nature trails.

**Studley Grange Garden and Leisure Park** beckon with a tropical experience, allowing you to walk among free-flying butterflies and meet meerkats, wallabies, Rigby the Raccoon, and more. **Cotswold Water Park**, with 150 lakes over 40 square miles, offers off-road cycle routes, peaceful footpaths, and abundant flora and fauna. Langford Lakes, a nature reserve by Wiltshire Wildlife Trust, invites birdwatching enthusiasts to witness dramatic courtship displays, spot various waterfowl, and catch glimpses of kingfishers and ospreys.

Embark on a family adventure at the **Hawk Conservancy Trust**, where world-class flying displays and special experience sessions reveal the wonders of over 150 birds of prey. Discover the remarkable wildlife wonders that Wiltshire has to offer, blending natural beauty with captivating encounters.



Longleat



Cotswold Water Park



Hawk Conservancy



Studley Grange Garden & Leisure Park



River Bourne Community Farm



Longleat



Stourhead

# Wiltshire On Screen Unveiled

From swashbuckling adventures to Jane Austen classics, *Dr Dolittle* to *Dr Who*, Wiltshire locations have played a leading role in a host of big screen movies and TV costume dramas. Some of the best known are listed below; for more information on how to follow in the footsteps of the stars go to [visitwiltshire.co.uk/film](http://visitwiltshire.co.uk/film)



Lacock



Filming Poldark in Corsham



Filming War Horse at Castle Combe



Old Wardour Castle

**Bowood House and Gardens** – has starred in a number of period dramas; it was a filming location for ITV's 2019 series *Sanditon* and the parkland stood in for Hyde Park in *Poldark*. One of the cottages on the Estate also featured as the cottage of Mr Carson in the 2019 *Downton Abbey* film.

**Bradford on Avon** – This charming town featured in the film version of *Downton Abbey* (2019) and has also appeared in *The White Princess* (2017) and *Creation* (2009). Its Tithe Barn and surrounding areas were seen in the BBC's *Wolf Hall* (2015) and *Robin of Sherwood*.

**Castle Combe** – Sometimes referred to as 'the prettiest village in England', Castle Combe has played host to many TV and film productions including *Dr Thorne* (2016), *War Horse* (2012), *The Wolf Man* (2010), *Stardust* (2007) and *Dr Dolittle* (1966).

**Corsham** – The High Street of this attractive market town was selected as the perfect match for 18th century Truro in series one of BBC's *Poldark* (2015). Locations near Corsham also featured in *Lark Rise to Candleford* (2008-2011). In 2023 Corsham's High Street was transformed into a 1980s scene for the Disney Plus series *Rivals*.

**Devizes** – Devizes achieved renown as Casterbridge in Hardy's *Far from the Madding Crowd* (1967) with scenes shot in the Market Place, St John's Church, the Corn Exchange and the Shambles Market. Nearby Roundway Down featured in Orwell's *Nineteen Eighty-Four* (1984).

**Great Chalfield Manor and Garden** – Owned by the National Trust, was used as Austin Friars, Thomas Cromwell's home in the 2024 *Wolf Hall*.

**Iford Manor Gardens** – Most recently these romantic, award-winning gardens featured in a re-make of *The Secret Garden* (2020). Iford Manor has also appeared in *The Razor's Edge* (1984), the BBC's *Robin of Sherwood* (1984-1986) and ITV's *Element of Doubt* (1996).

**Lacock** – Having featured in the final series of ITV's *Downton Abbey* (2015) this charming National Trust village made a welcome return in the film version (2019). It also featured in scenes set in the grounds of the Seymour family home for *Wolf Hall* (2024). It has also played host to a variety of classic films including *The White Princess* (2017), *Wolf Hall* (2015), *The Wolfman* (2010), *The Other Boleyn Girl* (2008) and *Pride and Prejudice* (2005). Scenes from *Harry Potter and the*

*Half Blood Prince* (2009) and *Harry Potter and the Chamber of Secrets* (2002) were shot here. Lacock featured in ITV's costume drama *Dr Thorne* (2016) too, and in the BBC production of *Cranford* (2007).

**Longleat** – The safari park has starred in various series of the BBC's *Animal Park*, while the Elizabethan house featured in *The Four Seasons* (2008), based on two of Rosamunde Pilcher's best-selling novels. Other productions filmed here include a Bollywood movie.

**Mompesson House** – Situated in Salisbury's Cathedral Close this National Trust mansion achieved celebrity status as the London home of Mrs Jennings in the Oscar-winning version of *Sense and Sensibility* (1995).

**Old Wardour Castle** – This impressive historic property experienced some modern-day drama when it was used for the filming of *Robin Hood, Prince of Thieves* (1991).

**Salisbury Cathedral** – The cathedral was the inspiration behind TV mini-series *Pillars of the Earth* (2010). With its awe-inspiring Gothic architecture, has also featured prominently in historical dramas. From *The Other Boleyn Girl* (2008) to the more recent Netflix series *The Crown* (2016) and *Elizabeth: The Golden Age* (2007), the cathedral's grandeur has lent authenticity to stories spanning different periods.

**Stonehenge** – In recent years this iconic location has featured in *Transformers: The Last Knight* (2017), *Thor: The Dark World* (2013) and *Doctor Who* (2010). It also appeared in the BBC production of *Tess of the d'Urbervilles* (2008).

**Stourhead** – This National Trust property's magnificent gardens were used in the filming of *Pride and Prejudice* (2005) for the scene where Lizzie initially rejects Darcy's proposal of marriage.

**Wilton House** – Most recently Wilton House has featured in hit Netflix series, *Bridgerton* (2020) and *Tomb Raider* (2018) and *The Crown* (2017). In *The Young Victoria* (2009) it represented Rosenau Castle, Prince Albert's Coburg and Buckingham Palace. The Double Cube Room featured in the cinema version of *Pride and Prejudice* (2005) and was also used for ballroom scenes in *Sense and Sensibility* (1995).

**Wilton Windmill** – Featured in *The Victorian Farm* produced by Lion TV for the BBC series.



Rivals filming in Corsham



Iford Manor Gardens



Animal Park at Longleat

# Great West Way®



Bradford on Avon



Reading



Roman Baths



Clifton, Bristol



Savill Gardens



Windsor



Travel by train using the Discoverer pass

Welcome to the Great West Way. It's time to explore England. To uncover tales of the past. And experience all that's to offer today. Welcome to a journey through time. And an adventure across England. The Great West Way is based on one of the first great roads, commissioned by the Kings of England. As you travel between London to Bristol, you'll uncover the very soul of England.

The Great West Way brings you to world-famous sites such as Stonehenge, Roman Bath with its double World Heritage status and Windsor Castle, but the real joy is in discovering somewhere different, a real slice of England that you can take back home with you – as memories, as photographs, or even as a bottle of craft ale or piece of local art.

At one end of the Great West Way is **London**, with its famous royal sights and rich cultural heritage. At the other, **Bath** and **Bristol** – close neighbours geographically, yes, but with very different personalities. Elegant Bath is renowned for its classical Georgian architecture and romantic literary connections. While Bristol is a riot of alternative art, music and dining experiences. In between lie relaxing riverside towns, lush green landscapes, and characterful villages.

There's so much more to the Great West Way than simply getting from A to B. The Great West Way is for travellers who want to explore further and delve deeper. Those who relish the journey. The curious, for whom the colourful characters they chance upon are as fascinating as the places they visit.

There are many ways to experience the Great West Way. But whether you choose to travel by road, rail or water, on two feet or two wheels, base yourself in one place for a while or move on every day, you can create your own itinerary and write your own story. The Great West Way navigates over 500 miles of twists and turns with tempting trails and off-the-beaten-track detours there is so much to explore. Follow paths taken by generations of travellers and you'll encounter the very essence of England.

Along the Great West Way you'll find three breathtaking natural landscapes – the Chilterns, the Cotswolds and the North Wessex Downs – as well as the UNESCO World Heritage Sites of Stonehenge and Avebury, Kew Gardens and Bath.

You can stand on the site of the sealing of **Magna Carta** at Runnymede. Watch the Changing of the Guard at **Windsor Castle**. Or get a handle on the royal heritage by visiting **Hampton Court Palace**. Or visit some of the Stately Homes such as Blenheim Palace or one of the many National Trust properties along the

route. Witness Hungerford's traditional 'Tutti Day' celebrations on the second Tuesday after Easter. Or join the party at Henley Festival.

Take some time out at **The Savill Garden** in Windsor Great Park. Commissioned by George V and created by Eric Savill in 1932, this special place has delighted nature lovers, photographers, friends and families.

Head to **Reading** and be prepared to be amazed by the history and cultural offering. Soak in the UK's only natural hot springs at Thermae Bath Spa. Pootle along the **Kennet & Avon Canal** on your very own narrowboat. Search for artwork by anonymous street artist, Banksy, in **Bristol**.

The Great West Way is easy to join and easy to follow. It passes by both Heathrow and Bristol airports. It's accessible for visitors travelling from the Channel ports or already based in London. It will take you to places you've always dreamed of visiting, and secret spots that even some locals have still to discover.

So go in search of the real England. Go to **GreatWestWay.co.uk** and discover your way.

@GreatWestWay

@theGreatWestWay

@GreatWestWay

## Great West Way Discoverer pass

To make the most of your Great West Way adventure, choose the **Great West Way Discoverer pass**, offering unlimited off-peak train travel from London Paddington or London Waterloo to Bristol Temple Meads, via the Reading and/or Basingstoke routes, with options to branch off towards Oxford.

Plus unlimited travel on designated bus services along the route. For international visitors the seven day pass is a great option and the one-day West pass works well for day visitors, with prices from just £30.50 per person. For further details and to book go to **gwr.com**

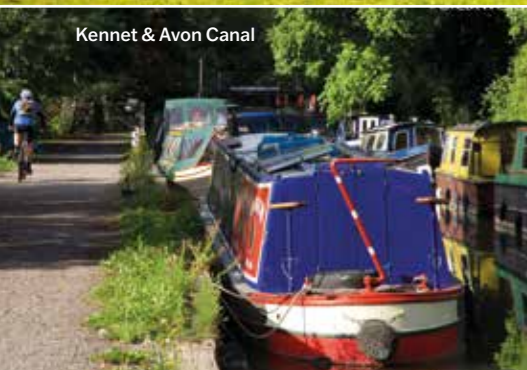




Stonehenge Huts



Longleat



Kennet & Avon Canal



Bradford on Avon



Silbury Hill

# This Way for a Journey Through Time

*The Great West Way weaves through the timeless county of Wiltshire. The Ancient Briton, Romans, Normans and Saxons have all left their mark. Now it's time for you to follow in their footsteps.*

## Wiltshire on the Great West Way®



The Great West Way is England undiluted. England concentrated. Around a quarter of it runs through the beautiful county of Wiltshire.

Much of the Great West Way's appeal lies in its enormous variety. Stroll around 'Capability' Brown parkland at **Bowood House and Gardens**. Channel your inner racing driver on a lap of **Castle Combe Circuit**. Or see how many incredible animals you can spot on a six-and-a-half-mile drive-through experience at **Longleat**, the first Safari Park outside of Africa.

If **Stonehenge** and **Avebury** feature on your wish list, try to visit at dawn or dusk to fully appreciate the magnetism that has drawn people to them over thousands of years.

The industrial revolution left a rich legacy in Wiltshire. Not least the **Kennet & Avon Canal**. Walk or cycle the towpath. Take to the water with a kayak or paddleboard. Relax aboard a traditional narrowboat. Uncover fascinating industrial archaeology at **Wilton Windmill** and **Crofton Beam Engines** near Marlborough. Or visit **McArthurGlen Designer Outlet Swindon**, housed in the beautifully renovated Grade II listed buildings of Brunel's former railway works, and search for bargains in over 90 top name stores.

Many of Wiltshire's timeless towns and villages are within easy reach of the Great West Way. Marvel at **Bradford on Avon's** 14th century tithe barn. Visit the heritage quarter in **Calne** to learn of its colourful past. Seek out the wealth of historic buildings in

**Chippenham**. Discover **Corsham**, familiar to many as Truro from BBC's Poldark. Unearth the rich heritage of Georgian houses in **Devizes**. Wander through the stunning National Trust village of **Lacock**. Explore hilltop **Malmesbury**, England's oldest borough. Stroll along the high street in the handsome former staging post of Marlborough. Stumble across unique industrial architecture in **Trowbridge**. Or visit the medieval city of **Salisbury** with its magnificent Cathedral.

With beer gardens for summer and log fires in winter, an authentic English pub experience is hard to beat. So settle down at one of Wiltshire's many traditional inns. If your Great West Way adventure includes an overnight stay, you can enjoy home-from-home hospitality in a friendly B&B, character and charm at **The Old Bell Hotel** or some serious pampering at **Whatley Manor Hotel and Spa**. Other options include the chance to live the rural dream on a farm stay, or climb aboard a traditional narrowboat and let the lapping waters soothe you to sleep.

Rail connections along the Great West Way are excellent, linking Wiltshire with London's Paddington and Waterloo stations at one end, Bristol and Bath at the other. Within 90 minutes, or less, of leaving the capital you can find yourself here, enjoying authentic English experiences.

Uncover Wiltshire's secrets. Go to **GreatWestWay.co.uk** and discover an essential strand of England's story.



It's Time for Wiltshire  
[www.visitwiltshire.co.uk](http://www.visitwiltshire.co.uk)





“  
Two inimitable  
stone circles...  
one outstanding  
World Heritage Site.  
”

# Unique and Unforgettable

Nowhere else in England has such a concentration of fascinating iconic sites as Wiltshire. For thousands of years, travellers have been seduced by their grandeur and magic. They continue to inspire a sense of wonder in today's visitors.

**Stonehenge** and **Avebury**. Two inimitable stone circles. One outstanding World Heritage Site. One that also embraces West Kennet Long Barrow, Silbury Hill and numerous associated sites across the wider landscape. Together they have a magnetism that has drawn people to them for thousands of years and celebrations marking the summer and winter solstices still take place today. No visit to Wiltshire would be complete without experiencing their magic for yourself.

**Stonehenge**, the world's most famous prehistoric monument, is the only hinged stone circle to feature lintels across some of its stones. **Avebury**, though less well known, is the largest megalithic stone circle in the world, and the only one to have a village built partly within it. Whilst their origins and meaning have been lost in the mists of time, together they have a magnetism that continues to draw people to them after thousands of years.

If you stand on Salisbury Plain at sunrise or sunset, it's easy to see why the ancient Britons believed **Stonehenge** was special. One of its many unique features is its orientation on the rising and setting sun, although why it was built in this way remains an enduring mystery. **Stonehenge visitor centre** brings its story to life through outstanding exhibitions showcasing items on loan from nearby museums, a superb 360° audio-visual stone circle experience, and replicas of Neolithic houses built from authentic

materials. Understandably it's a popular place, so entry is by timed ticket and pre-booking is strongly recommended.

Arrive at **Avebury** on a misty autumnal morning, or in the depths of winter when a sprinkling of snow dusts the ground, and you'll understand the appeal this sacred place held for our ancestors. Here, no less than three stone circles and part of the village shelter within the massive outer bank and ditch. Stroll among the stones. Touch them, if you will. Try your hand at dowsing for ley lines. Then complete your Avebury experience with visits to the Alexander Keiller Museum and Avebury Manor and Garden.

Dotted across the wider landscape of the World Heritage Site are other monuments, some of them older than the stone circles themselves. Near Avebury you'll find **Silbury Hill**, the largest artificial mound in Europe; West Kennet Long Barrow, one of Britain's largest Stone Age burial sites; and the 'dolmen' burial chamber of **The Devil's Den**. Not far from Stonehenge are the Bronze Age burial mounds at **King Barrow Ridge**; the site of a Neolithic settlement and henge at **Durrington Walls**; and earthworks including **The Cursus** and **The Avenue**.

**The Stonehenge Tour** makes a convenient way to explore several of Wiltshire's ancient wonders. Picking up from Salisbury railway station and the city centre, it runs via **Old Sarum** to Stonehenge, before returning via **Salisbury Cathedral**.

Salisbury Cathedral is a magnificent example of Early English Gothic architecture. Its glorious Chapter House is home to the finest of only four original **Magna Carta** manuscripts, dating from 1215. Other incomparable features include the tallest spire in Britain, Britain's largest cathedral close and cloisters, and the world's oldest working clock. For stunning panoramic views, take a Tower Tour up narrow spiral stairs to the foot of the spire, 225 feet (over 68 metres) above ground.

Among Wiltshire's other iconic views are its **White Horses**, carved into the rolling chalk downs. Westbury, the oldest, dates from 1778 (although local records suggest it may have replaced an even earlier one carved in the late 1600s). Devizes, the most recent, was cut into Roundway Hill in 1999, to mark the new millennium. For further inspiration, view our white horse film here: [visitwiltshire.co.uk/videos](http://visitwiltshire.co.uk/videos)

Wiltshire's World Heritage Site and other timeless wonders are within easy reach of all accommodation in this guide. To experience the magic for yourself, an overnight visit is highly recommended.

Go to [visitwiltshire.co.uk/accommodation](http://visitwiltshire.co.uk/accommodation) for a wide range of places to stay.





Longleat Sky Safari



2025 marks the 250th anniversary of Jane Austen's life and taking place across Wiltshire, there will be plenty of Regency-themed things to do! From Georgian Afternoon Teas to Jane Austen inspired museum trips and visits to iconic filming locations, check out our what's on pages on [visitwiltshire.co.uk/what'son](http://visitwiltshire.co.uk/what'son)

# Seasonal Celebrations

Keep up to date with full details of events and festivals in Wiltshire on our website, the number one source for latest information on what's on in Wiltshire.

Each season brings a variety of different events and festivals to enjoy. Look below at a typical year. As events and festivals are announced they will be added to the website [visitwiltshire.co.uk/what'son](http://visitwiltshire.co.uk/what'son)



Christmas in Marlborough

## Spring

Head to **Melksham** for a family friendly town festival with music, food vendors and entertainment. Enjoy a selection of gins at the Chippenham gin festival which will also family fun afternoon session. **Highworth May Day** which will include traditional Morris dancing. So, plenty to whet your appetite.

**Salisbury International Arts Festival:** The festival will feature a diverse programme of music, theatre, film, dance, spoken word, visual arts, family and free events, created by Wiltshire Creative's Artistic Director Gareth Machin, Associate Artist violinist Harriet Mackenzie, and Festival Producer Lucy Babb, alongside a team of associate curators.

**Corsham Walking Festival:** Corsham's Walking Festival, catering for a wide range of walking enthusiasts and abilities walks vary in distance from 1.5 to 16.5 miles that go from Easy through Moderate to Challenging.

## Summer

**Bradford on Avon Food and Drink Festival:** A festival celebrating everything that is wonderful about food and drink.

**Chalke History Festival:** The largest festival in the UK dedicated entirely to history.

**Marlborough College Summer School:** With over 500 courses encompassing the creative arts, history, science, body and mind, life skills, sport and country pursuits.

## Autumn

Check the website for up-to-date details for spooky Halloween events! From pumpkin picking at the farm to ghoulishly good days out in historic surroundings!

**Longleat Sky Safari:** Longleat's hot air balloon festival. The skies above the estate will come to life with all the vibrant colours of the rainbow as hot air balloons take to the air in an astounding procession.

Visit Wiltshire's houses and gardens for stunning autumn colour – Visit **National Trust Stourhead, Bowood House & Gardens** and **Westonbirt** for stunning colours.

**Marlborough Litfest:** The festival includes fiction, non-fiction, poetry events, workshops, debut novelists, award-winning established names, children's authors and more!

## Winter

**Bonfire and firework celebrations throughout Wiltshire:** November – January. Selected dates check website for dates.

**Longleat Festival of Light:** The illuminating lantern spectacle will see hundreds of silk-strewn scenes and digital installations embellishing the ornate Longleat Estate once more, bringing the spirit of the festive season to lustrous light.

**Lantern Parades:** in Devizes and Salisbury.

Pantomime at **Salisbury Playhouse & Wyvern Theatre.**

**Various dates throughout November and December:** Christmas Light switch on and Christmas Fayres around Wiltshire, look out for specific details to get you into the Christmas spirit!



Chalke History Festival



Taste of Corsham Food Festival



Longleat Festival of Light



Stourhead Christmas Lights

“  
In Wiltshire,  
imagination  
and creativity  
flourish.”



Parade House



Longleat Festival of Light



Salisbury International Arts Festival



Salisbury Arts Centre



Salisbury Art Scene



Wiltshire Music Centre



The Lord Chamberlain's Men

## Take Time Out

Theatres, galleries, arts centres. Plays, recitals, exhibitions. Inspirational venues and outstanding entertainment, dedicated to making imaginations fly. With such beautiful and diverse countryside as our backdrop, Wiltshire is a canvas for creativity.

**Wiltshire Music Centre**, in Bradford on Avon, hosts over 120 events every year, from classical, jazz and folk music to children's and storytelling shows. Sean Rafferty of BBC Radio 3 once described its 300-seat concert hall as having 'the finest acoustic outside London'. No surprise, then, that musicians of international renown are regular performers here. In Corsham,

**The Pound** arts centre is a thriving venue with a year-round programme of shows, exhibitions and films. **Pound Arts** creates live performances across Wiltshire under the banner of Rural Arts Touring, running both the family-focussed **Blue Sky Festival** in June and the deliciously decadent **Magic and Mayhem Festival** in November. At the heart of the community, **Trowbridge Town Hall Arts** offers professional performances and exhibitions by companies and artists from around the world.

Under the banner of **Wiltshire Creative**, three of Salisbury's arts venues have joined forces to form an exciting pan-arts organisation, rooted in the city, yet drawing inspiration from across the county and beyond. **Salisbury Playhouse** is renowned for commissioning and producing new works as

well as hosting touring productions. **Salisbury Arts Centre** is a vibrant hub of activity housed in a beautiful deconsecrated church. While **Salisbury International Arts Festival** takes over the city for three fabulous weeks from the end of May.

**Parade House** in Trowbridge is open on a regular basis for ticketed public events and private tours. It even has its own cinema and bar in the historic vaults. The luxury 24-seat cinema The Screening Room opened in the historic vaults of Parade House in 2023, showing the best in classic and independent cinema each week. The adjoining Ushers Bar is open on Film Nights for drinks and light meals, and other selected evenings for drinks and special events.

There are several music festivals that take place here in Wiltshire including the world-renowned WOMAD Festival and the End of the Road Festival, held in the beautiful **Larmer Tree gardens**.

The small village of Edington, near Westbury, comes alive in late August with the arrival of the **Edington Music Festival**, focusing on choral music.

Taking place just south of Salisbury, in the beautiful Cranborne Chase National Landscape is the Chalke Valley History Festival. Not only will you be able to enjoy talks by famous historians and broadcasters but you can enjoy re-enactments, air shows and discussions and debates.

Events including open-air theatre, historic re-enactments, firework displays and Christmas celebrations are regular occurrences at historic properties too. Including **Arundells, Avebury and Bowood, Lacock, Longleat and Mompesson House, Old Sarum, Old Wardour Castle, Stourhead** and **Westonbirt Arboretum**.

We're a creative lot in Wiltshire. Our arts scene is thriving, inventive and engaging. If you appreciate art in any of its forms, Wiltshire is the perfect place to immerse yourself in timeless pleasures.

For further information on the many artistic opportunities to be enjoyed around the county, go to [visitwiltshire.co.uk/what'son](http://visitwiltshire.co.uk/what'son)



# Good Value Days Out

*To help you we've put together 10 things to do for £10 or less.*

## Salisbury Cathedral

Head to the Medieval Salisbury Cathedral this season and marvel at its beautifully intricate architectural designs both inside and out. Upon your arrival to The Close, be sure to appreciate the magnificent spire as it rises to a breath-taking 404ft, the tallest in the country! Inside, be greeted by incredible arches and stained-glass windows, as well as cloisters surrounding a pretty courtyard at its centre.

## Avebury Stone Circle and Avebury Manor and Gardens

Recognised for its globally important Neolithic and Bronze Age monuments, Avebury welcomes you to explore the world's largest stone circle, as well as stone avenues and ancient tombs this year. Just next door is Avebury Manor and Gardens, a beautifully decorated house which showcases different historical periods in which it was lived in. The hands-on experience allows for these many stories to be brought to life.

## Wiltshire Museum

Make your way to Devizes where you will find a host of historical attractions including Wiltshire Museum. Discover the county's fascinating history with collections spanning across the last 6,000 years! Home to the best Bronze Age archaeology display in Britain, here you will also find gold from the time of Stonehenge, as well as various galleries in the Prehistoric Wiltshire exhibition. Learn more about the stories from those who built and used the world-renowned monuments as you discover a display of artefacts dating back over 4,000 years.

## Old Sarum

Discover the story of original Salisbury when visiting English Heritage's Old Sarum this year! Capture 360 degree views of beautiful Wiltshire countryside as you walk amongst historical ruins. From the mighty Iron Age fort where the first cathedral once stood, to the royal castle on the motte, enjoy a fun day out exploring the once thriving town of Old Sarum this season.

## REME Museum

REME Museum in Chippenham offers a unique collection of historical vehicles, uniforms, medals, and weaponry, all used in displaying the history of the Corps from within the Royal Electrical and Mechanical Engineers. Enhanced by interactive and immersive displays, enjoy a hands-on experience as you walk amongst the various artifacts.

## Iford Manor Gardens

Tucked away at the bottom of a tranquil valley with the Wiltshire/Somerset border running through, Iford Manor invites you to step into its timeless world as you explore its Grade I listed garden. Twisting through ancient statues, columns, and terraces, be sure to appreciate the incredible architecture influenced by Italian, Byzantine, Ancient Roman and Oriental designs. Open from April-September, visit the beautiful garden as flowers bloom and flourish during the warmer months.

## Studley Grange Garden & Leisure Park

A visit to Studley Grange Garden & Leisure Park is the perfect weekend destination for the whole family! From Meerkats and energetic Wallabies to the resident Raccoon, Rigby, be sure to get up close and personal during the Zoos animal feeding times. Entering the Butterfly World will provide you with a great taste of Wiltshire's tropics as you discover an enchanting world of butterflies, fish filled ponds, and wonderful tropical flowers.

## Crofton Beam Engines

Found along the Kennet and Avon Canal and amongst unspoiled Wiltshire countryside is Crofton Beam Engines. Built over 200 years ago as a way of supplying water to the highest point of the canal, Crofton Beam Engines is one of the most important surviving remains of the Industrial Revolution in England! Discover the two steam-powered beam pumping engines which date back as early as 1812!

## Fisherton Mill

Built in 1880 as a grain mill, Fisherton Mill in Salisbury is the south of England's largest independent gallery. Set over two floors and featuring an award-winning café and artist studios, the Mill is a true haven for shopaholics, art lovers and foodies alike. Discover a range of displays from leading artists, furniture makers and sculptors, as well as an ever-changing array of jewellery, glasswork and other decorative items!

## Lower Moor - Wiltshire Wildlife Trust

Made up of four reserves Lower Moor offers a landscape of fascinating contrasts. Owned by Wiltshire Wildlife Trust and free to explore all year round, embark on an exciting adventure as you discover wildlife and beautiful scenery which surrounds the picturesque pathways this season.



Walking at Old Sarum



Crofton Beam Engine



Avebury



Iford Manor Gardens

## Affordable adventures

If you're in search of an affordable holiday or looking to save some money during your days out, Wiltshire has plenty of opportunities to make the most of your budget. Follow our tips below to maximize your experience without breaking the bank:

- **Special Offers:** Keep an eye out for seasonal promotions, money-saving vouchers, pub and restaurant deals, and discounted entry to attractions on our special offers pages.
- **Market Deals:** Strike a bargain at our local markets, where you can stock up your fridge at prices often lower than supermarkets.
- **Free Walking and Cycling Routes:** Download our walking or cycling routes for free and enjoy burning off some steam in the glorious Wiltshire countryside.
- **Plan Ahead:** Save money on transportation by planning your visit in advance. Train companies often offer special rates on off-peak tickets or during school holidays. Once in the county, explore special rates on bus passes and explorer tickets. Learn more on the Connecting Wiltshire website.
- **Free Events:** Attend one of the many free events across the county, including Heritage Open Days, Wylde Valley Art Trail, and more.
- **Historic Villages Exploration:** Discover the charm of our historic villages, from picturesque Lacock and Castle Combe to the Woodford Valley leading up to Stonehenge and the atmospheric Avebury stone circle. Learn more about some of our historic villages.
- **Retail Therapy Savings:** If you can't resist a bit of retail therapy, find savings at the McArthurGlen Designer Outlet Swindon.

Enjoy your time in Wiltshire without breaking the bank!

To check up to date admission prices please go to [visitwiltshire.co.uk/things-to-do/attractions](http://visitwiltshire.co.uk/things-to-do/attractions)



Salisbury Market



McArthurGlen Designer Outlet



Three Daggers Farm Shop



Chippenham

“ Unique and unusual items you won't find on every high street. ”

# What's in Store...

Whether you're looking for designer brands or high street names, independent outlets or shopping malls, farm shops or markets, you'll find everything you want in Wiltshire!

Our award for the most unusual shopping location goes to... Avebury! Probably not the first place that comes to mind when planning a little retail therapy. Yet here, within the world's largest prehistoric stone circle, you'll find not one, but two charming businesses: **The Henge Shop** and **Elements of Avebury**.

Not far geographically, but a million miles away in atmosphere, **McArthurGlen Designer Outlet Swindon** makes a great day out for all the family. Over 90 stores to choose from... A huge range of high street and designer labels... Up to 60% off recommended retail prices... All housed in the tastefully converted Grade II listed buildings of Brunel's former Great Western Railway works. Other retail opportunities in **Swindon** include the traditional stores of Old Town and shopping malls in the modern city centre.

All around Wiltshire, numerous small, family-run outlets continue to thrive. Offering a relaxed and unhurried shopping experience as they've been doing for generations. In **Devizes**, for example. Hilltop **Malmesbury**. Or **Tisbury** - which more than makes up for its lack of size with a unique selection of interesting, independent shops. For stylish stores in a cosmopolitan setting, the quintessentially English towns of **Marlborough** and **Bradford on Avon** are popular choices. As is **Corsham**, where many of the Bath stone buildings on High Street are independent businesses, providing irresistible retail opportunities.

**PA Oxley** near Calne is a treasure trove of antique clocks and barometers. In Salisbury you'll find galleries, studios and workshops at **Fisherton Mill** and fine lingerie at **Annie's Just Jane**.

As befits a county famous for its local produce there are farm shops aplenty - **Allington Farm Shop** near Chippenham, for example. At **Eversfield Organic** in Marlborough you showcase the best organic food & drink, award-winning produce and grass-fed organic meat from their own farm. There is butcher, fishmonger, deli, fresh fruit and veg, and even a 'Wine Cave'. Wiltshire is also home to markets of every shape and size. Indoor, outdoor and farmers' markets... continental and Christmas markets... vintage, artisan and foodie markets... we've got them all. What better way to spend an hour or two than browsing the many stalls, where every imaginable item is on offer. Top quality fruit and vegetables. Meat, fish, cheese and eggs. Haberdashery, clothing, jewellery and more.

First prize for the longest running market goes to Trowbridge, Wiltshire's county town, where stallholders have been trading since the year 1200. These days, it's on a Wednesday. Hot on its heels, history-wise, is Salisbury's Charter Market, which has been coming to the city on Tuesdays and Saturdays (except the third Tuesday in October) for nigh on 800 years. Other bustling market towns include Amesbury (Wednesday), Bradford on Avon (Thursday), Calne (Friday), Chippenham (Friday and Saturday), Corsham (Tuesday), Devizes (Thursday), Highworth (Saturday), Marlborough (Wednesday and Saturday), Pewsey (Tuesday), Warminster (Friday), and Wroughton (Friday). For up-to-date details of these and other markets go to [visitwiltshire.co.uk/markets](http://visitwiltshire.co.uk/markets)



Bradford on Avon Market

Marlborough



Coffee Gems



Bishopstow Hotel & Spa



Allium



Fisherton Mill



Harvest Coffee Shop

“  
Menus change  
with the seasons.  
”

# A Wiltshire Culinary Journey

**Malmesbury Pudding. Wiltshire Lardy Cake. Wiltshire Loaf. (That last one's a cheese, by the way, not a type of bread!) Just a few of our traditional specialities. Made using recipes handed down through the generations. Still tasting as good as ever today.**

When it comes to local produce, Wiltshire's pedigree is second to none. Back in 18th century Calne, the Harris family invented the traditional technique of curing bacon and ham. In time, this became known as the 'Wiltshire Cure' and is now recognised countrywide. So bacon features widely on the breakfast menu. Home-made bread, jam and preserves are Wiltshire staples too. And, depending on where you stay, you could even find yourself eating the very eggs you collected fresh from the hens that morning. (Toasted 'fingers' dipped in golden yolk, anyone?)

If a busy day's sightseeing is on the agenda, you may find yourself feeling a bit peckish. Which is good, as it gives you the perfect excuse to take a break and savour the taste of Wiltshire. You'll find coffee shops and tea rooms serving mouth-watering cakes and pastries. Relax and enjoy the multi award winning **Gallery Café at Fisherton Mill** in Salisbury, or head to Chippenham to indulge your love of coffee at **Harvest Coffee shop and Coffee Gems**, one of the UK's very few highest-quality artisan roasteries where they hold fun and informative, hands-on coffee making and tasting experiences. Delicious ice cream, made on site using milk from the farm's own cows. Not to mention an abundance of friendly inns offering tasty food and drink at reasonable prices. At restaurants, wine bars and bistros across the county, menus change with the seasons. Timeless classics and new favourites are crafted with care and attention. Every day.

If celebrations are the order of the day you could head for **Rick Stein's** restaurant in Marlborough or **Pythouse Kitchen Garden** a restaurant within a stunning Victorian walled garden in Tisbury. Book a table at **The Old Bell** in Malmesbury (England's oldest hotel). Or **Allium** an independent, family-run fine dining restaurant, serving the best of modern British cuisine, located in the centre of the beautiful charter market city of Salisbury. The hotel restaurants at **Lucknam Park** near Chippenham and **Whatley Manor** near Malmesbury. All of which have won a coveted Michelin star (or two!).

With such a wealth of fresh local produce right here on the doorstep, Wiltshire sets great store by its mouth-watering range of foodie events. Sample the beer festivals in Devizes (February and July), Chippenham and Malmesbury (April), Blunsdon (May) and Swindon (October). Or savour the food and drink festivals in Devizes (May), Corsham (June), or Bromham, Calne, Melksham and Salisbury (September). Wander among an array of tempting stalls. Inhale the aromas of freshly-ground coffee and herbs.

Eat your fill from sizzling sausages, barbecues or a hog roast. Then wash it all down with one of our lip-smacking local ales. Tunnel Vision... Bishop's Tipple... Flint Knapper... in Wiltshire the names are almost as delicious as the brews themselves.

You can enjoy a home-grown pint at **Wadworth Brewery**. You can discover your own personal gin profile – and their range

of signature cocktails – at **Bombay Sapphire Distillery** in Whitchurch. Or sample award-winning still and sparkling wines at **Bluestone Vineyards** near Salisbury or try red or rose wines at the newly opened **Carvers Hill Estate** vineyard and winery near Marlborough. On the Fonthill Estate you will find **Stone Daisy Brewery** and **Witchmark Distillery** producing high quality beer and whiskey using mainly ingredients from the estate itself.

Why not try out your own culinary techniques at one of our cookery schools? You'll find a wide range of courses for adults and children at **Vaughan's Cookery School** in Devizes, The Farm Cookery School in Bromham, The Cooking School in Warminster.

Taste, provenance, food miles... in Wiltshire, good food matters. Here, we create food to feed the soul. Lucky, then, that life moves at a gentler pace. Giving you time to savour the culinary magic conjured up by our chefs, bakers and brewers. Start the day by tucking into a hearty Wiltshire breakfast. Then linger over elevenses. Treat yourself to afternoon tea. While away the hours over a long lunch, or dinner with family and friends. No hurry. It'll be ready in a Wiltshire minute.

For more inspiration or go to [www.visitwiltshire.co.uk/food-and-drink](http://www.visitwiltshire.co.uk/food-and-drink)



Cumberwell Park Golf Club



Salisbury Races



Woolley Grange



Hill Side Cottage



Lucknam Park Hotel & Spa



Lucknam Park Hotel & Spa



Whatley Manor



Rein and Shine

# Rejuvenate & De-stress

Horse riding is a great way to discover Wiltshire's varied and breathtaking scenery. Follow bridleways across the World Heritage Site of Stonehenge and Avebury. Trek within the New Forest National Park. Or sample sections of the Ridgeway National Trail.

Surrounded by 500 acres of unspoilt parkland, **Lucknam Park Equestrian Centre** near Chippenham has access to numerous routes across the southern Cotswolds. With 35 horses of all sizes and capabilities it welcomes adults and children, complete beginners and expert riders alike. Based at Braydon in north Wiltshire, **Rein and Shine** offers private, semi-private and group lessons, as well as short-term livery and holiday events for children. All ages and abilities are welcome here too.

For horse racing enthusiasts, **Salisbury Racecourse** holds sixteen flat race meetings between April and October each year. With a mix of afternoon and evening fixtures it combines high quality racing with a friendly and enjoyable day out. Accompanied children are always welcome and entertainments are provided at weekend and evening meetings. They've been laying the odds here since the early 1600s, making it one of England's most historic racecourses. Thanks to a glorious location on the eastern edge of Cranborne Chase, with the soaring Cathedral spire in the distance, the views are as outstanding as the racing.



Roman Baths



meticulous 18-hole championship course at **Bowood Golf and Country Club** blends perfectly with woodland and undulating countryside, looking out across rolling parkland towards the Cherhill White Horse. **Cumberwell Park Golf Club**, near Bradford on Avon, has a total of five 9-hole courses set within 700 acres of beautiful parkland, a delightful blend of rolling hills, lakes and streams, natural copse and woodland. If you feel in need of a little practice before you head out, **Sleight Valley Golf Driving Range** on the edge of Devizes provides twelve floodlit bays, plus tuition with PGA professionals. **The Manor House Hotel & Golf Club** has an award-winning 18-hole golf course designed by the late Peter Alliss, nestled in the Cotswold countryside, bordering the village of Castle Combe.

There's nothing quite like a luxurious spa experience for restoring body and soul. If you're staying in Salisbury the Lime Tree Spa

adjoins the **Milford Hall Hotel**, a delightful Boutique Spa offering a wide selection of therapies to really compliment your stay. Surrounded by Wiltshire's magnificent landscape, **Bishopstrow, Bowood and Lucknam Park** are among the UK's finest spa hotels; perfect sanctuaries from the pressures of everyday life. Facilities vary, but chances are you'll be able to pamper yourself with a choice of calming beauty treatments. Exercise in a state-of-the-art gym. Detox in a steam room. Chill out in a hot tub. Or paddle gently around an infinity pool. For added indulgence, treat yourself to an 'Afternoon Tea and Spa Package'. Or ring the changes by combining riding and relaxation on a 'Saddle and Spa Day'.



The Gym, Bowood Hotel



Castle Combe Race Circuit



Live Escape Salisbury



Salisbury Plain Safari



Netheravon Skydive



“ Experience the ultimate adrenalin rush. ”

# Send Your Heart Rate Soaring

If jumping out of a plane from almost three miles high sounds like the ideal way to relax and unwind, team up with GoSkydive or Skydive Netheravon for the experience of a lifetime. On a tandem skydive with one of their highly qualified instructors you'll enjoy up to a minute's freefall against the stunning backdrop of Salisbury Plain. One day, one jump, one big adventure!

Think unrivalled excitement and exhilaration in the air, followed by elation and a real sense of achievement on landing – if this doesn't set your pulse racing, nothing will! At Netheravon, skydivers with over 200 jumps under their belt can even have a go at wingsuiting, a whole new way to experience the freedom of the skies.

**The Arc, Climbing Academy** in Chippenham offers bouldering, roped climbing and auto belays for all ages and abilities are welcome. The site features a striking outdoor climbing wall, a free skatepark, adventure playground and a cafe.

Back on solid ground, **Castle Combe Circuit** has been welcoming fans of racing, car shows and events for the past 70 years! With a full racing calendar featuring three of its own buoyant club championships and the Hot Hatch Challenge as well as a host of other events, whether you want to race, watch or experience they've got it all!



Cotswolds Water Park



Treasure Trails



Wiltshire Outdoor Learning Team



The Arc

As one of the UK's best-loved circuits, Castle Combe offers spectacular racing, modern facilities and stunning scenery. With so much variety, exhilarating entertainment and good value action, this is the West Country's home of motorsport.

Sign up for a **Salisbury Plain Safari** and sit back as their iconic Land Rover Defender transports you to far flung parts of the Wiltshire landscape, hidden places inaccessible to many other vehicles. Take spectacular views of Europe's largest expanse of chalk downland... throw in some rutted tracks, deep puddles and bumpy roads... add a splash or two of mud and you have all the makings of an expedition to write home about.

Prefer your activities wet and wild? Then head to the **Cotswold Water Park** for canoeing, kayaking, paddleboarding, sailing, swimming, wakeboarding, waterskiing and windsurfing. Or for an (almost) A-Z of activities, join **Wiltshire Outdoor Learning Team** to experience abseiling, archery, axe throwing, bush craft canoeing, crossbows, high ropes, kayaking, laser tag, mountain biking, orienteering, raft building, stand-up paddle boarding, a Tarzan tree top trail, zip wires and more!

For fitness fans and lovers of the great outdoors Wiltshire offers plenty of extreme sporting events to take part in too. Half and full marathons, horse trials, cycling sportives, epic canoe races – there are no limits, other than your own endurance.

For those who get a kick out of racing against the clock, real life escape games have taken the world by storm. Faced with an array of puzzles, riddles and clues, your team has to work swiftly to solve the mystery and escape from captivity. Unique, interactive challenges are offered by **Live Escape Salisbury** and **Salisbury Escape Rooms**. So choose your favourite theme and start sleuthing. But don't forget, for each challenge you have only one hour, and time is fast running out...

Treasure hunts are another great way to have fun with friends and family. **Treasure Trails** offer challenges in over 20 locations around Wiltshire – just download a self-guided booklet and set out on your expedition. Your mission: to find and solve intriguing clues on buildings, statues and monuments, revealing fascinating history and stunning scenery along the way.

In Salisbury you can find your way around the fun way with **Text Quest**. As its name suggests, you receive a text with directions and a clue. Reply with the right answer and you receive the next clue. Pit your wits against other teams. Aim for a personal best. Or just amble round at your own pace, enjoying the sights. However you play it, it's time to channel your inner Holmes and Watson.

Why not share your adventure stories with other enthusiasts using **#timeforwiltshire**



Autumn colours at Bowood House & Gardens



Stapleford



Vale of Pewsey



Iford Manor Gardens



Autumn colours at Stourhead



North Wessex Downs



Snakeshead Fritillaries

# Year Round Delights

What view did you wake up to this morning?  
 Newborn lambs taking their first unsteady steps?  
 Scarlet poppies nodding amid fields of golden corn?  
 Blankets of mist floating low over meadows? Mighty  
 standing stones sparkling with frost? In Wiltshire  
 you can enjoy all these sights, and more...

Summer is traditionally a delightful time to visit Wiltshire. Long, lazy days filled with sunshine create the perfect backdrop for outdoor pursuits. Embark on a cycling or horse riding adventure, explore stately homes and landscape gardens, or pack a picnic and head for the hills. Join thousands to witness the Summer Solstice at **Stonehenge or Avebury**, where the sun bathes ancient stones in the first light of dawn. As the festival season unfolds, warm evenings beckon you to open-air theatres and other outdoor events.

Autumn's Kaleidoscope: Once the harvest has been safely gathered, autumn sets in with a burst of colour. Halloween celebrations, firework displays, and gardens adorned in autumn hues make this season special. **Stourhead, Bowood, Longleat**, the Savernake Forest, and the New Forest National Park paint the landscape in a dazzling mix of red and gold. Catch a falling leaf, they say, for good luck – worth a try amidst nature's autumnal spectacle.

Festive Tranquillity: Amidst the festive hustle, a short break in Wiltshire lifts your spirits. Wander through a Wiltshire winter wonderland adorned with enchanting light trails. Seek refuge from the cold in traditional Wiltshire pubs, where mulled wine

warms you by an open fire, and hearty dishes fuel festive cheer. Complete your holiday preparations with late-night shopping in charming market towns.

After celebrating the New Year, breathe in the crisp winter air in Wiltshire's breathtaking countryside. Almost half the county lies within a National Landscape, if you're lucky offering a pristine snowy landscape to explore. **Lacock Abbey** and **Lydiard Park** boast dramatic displays of snowdrops, creating a picturesque scene to kickstart the year on a refreshing note.

As winter gives way to spring, Wiltshire transforms. Golden daffodils bloom, primroses and celandine dot the verges, and hedgerows burst into vibrant greenery. Ancient woodlands carpeted with bluebells and lowland pastures adorned with rare Snakeshead fritillaries reveal nature in all its glory. Wiltshire gives you the space and time to appreciate nature's bounty and celebrate the changing seasons.

Wiltshire is your year-round sanctuary to escape, rejuvenate, and embrace the beauty of each season. Plan your escape to the country and immerse yourself in the wonders of Wiltshire throughout the year.



Bluebells, West Woods



Stourhead Lights



Lacock Abbey



Woodford Valley



Caen Hill Locks, Devizes

# Perfect for Outdoor Escapades



Take a break from the hustle and bustle of daily life this year and immerse yourself in the splendour of Wiltshire's awe-inspiring countryside. Set out on a scenic pony trek, cast your line for a day of fishing, or embrace the tranquillity of canoeing or paddleboarding. Whatever your preference, Wiltshire invites you to create new stories at every turn.

For those travelling under their own steam we have an outstanding array of walks you can comfortably complete within just a few hours. Follow in the footsteps of the ancient drovers. Meander through our market towns. Amble along the towpath of the **Kennet & Avon Canal**. Even if you're short on time, you'll never be short on views! If you hanker after more serious, long distance routes you can stride out to your heart's content too. Walk the Wansdyke. Roam the Ridgeway. Hike the White Horse Trail. Tackle their entire length over several days (sturdy shoes recommended!) or cherry pick the bits you like best.

The Pewsey Vale Circular Way is a new long-distance 77 mile walking, cycling and riding route through dramatic downland, secluded woodland, sweeping valleys and the Kennet & Avon Canal.

Cyclists – whether seasoned experts, keen amateurs or just starting out – have plenty of options too. From the confidence building to the downright daring. Looking for a stress-free family outing? Give the Golden Way a go. Crave the excitement of off-road adventure? **The Longleat Estate** is a great place to start. Keen to test your mettle on a demanding long-distance trail? The 160-mile Wiltshire Cycleway should provide more than enough of a challenge. **New Forest Cycling Tours** run a variety of guided cycle tours in Wiltshire and beyond. There's an exciting selection

of cycling events throughout the year to watch or take part in too. And don't worry if you've left your wheels at home – you can hire a bike from the Towpath Trail in **Bradford on Avon**.

You'll find a great choice of walker- and cyclist-friendly accommodation on our website. Accommodation providers are often happy to advise on their favourite local routes, and many actively welcome outdoor enthusiasts by offering facilities such as drying rooms for wet clothing. Go to [visitwiltshire.co.uk/accommodation](http://visitwiltshire.co.uk/accommodation) to find out more. If your idea of happiness is heading off in the morning with only a packed lunch and a map for company, that's fine by us. But if you'd like a little help with planning your itinerary, arranging places to stay – even transporting your luggage – local specialists such as **Foot Trails, Oldbury Tours, Galahad Tours, Britain's Best Heritage Tours, Salisbury, Stonehenge and Sarum Tours, and Mad Max Tours** are on hand to take the hassle out of your holiday.

Further details of a wide range of other things to do around Wiltshire, as well as walking and cycling routes, can be found at [visitwiltshire.co.uk/activities](http://visitwiltshire.co.uk/activities). Maps and routes for cyclists and walkers can be downloaded from [connectingwiltshire.co.uk](http://connectingwiltshire.co.uk) too. Or contact one of the Information Centres listed on page 66. For walkers download the **Wiltshire Walks app** that includes over 150 GPS guided walking routes in and around Wiltshire.

These days we're all so busy. 24/7 this. 5G that. Sometimes you need to escape, press pause and let time stand still. To take things at a gentler pace, try a narrowboat cruise along the **Kennet & Avon Canal**. You can also take a longer stay on canal with **Foxhangers Canal Holidays**, starting from the bottom of the iconic Calne Hill Locks. With just three speeds – slow, very slow and stop – there's no need for speed cameras, although the more conventional kind could come in handy!

“  
Over 8,200 paths for walkers and cyclists.  
”



New Forest Cycling Tours



Pepperbox Hill



Kayaking



Shearwater Lake



The Ridgeway



Marlborough College Summer School



Langford Lakes



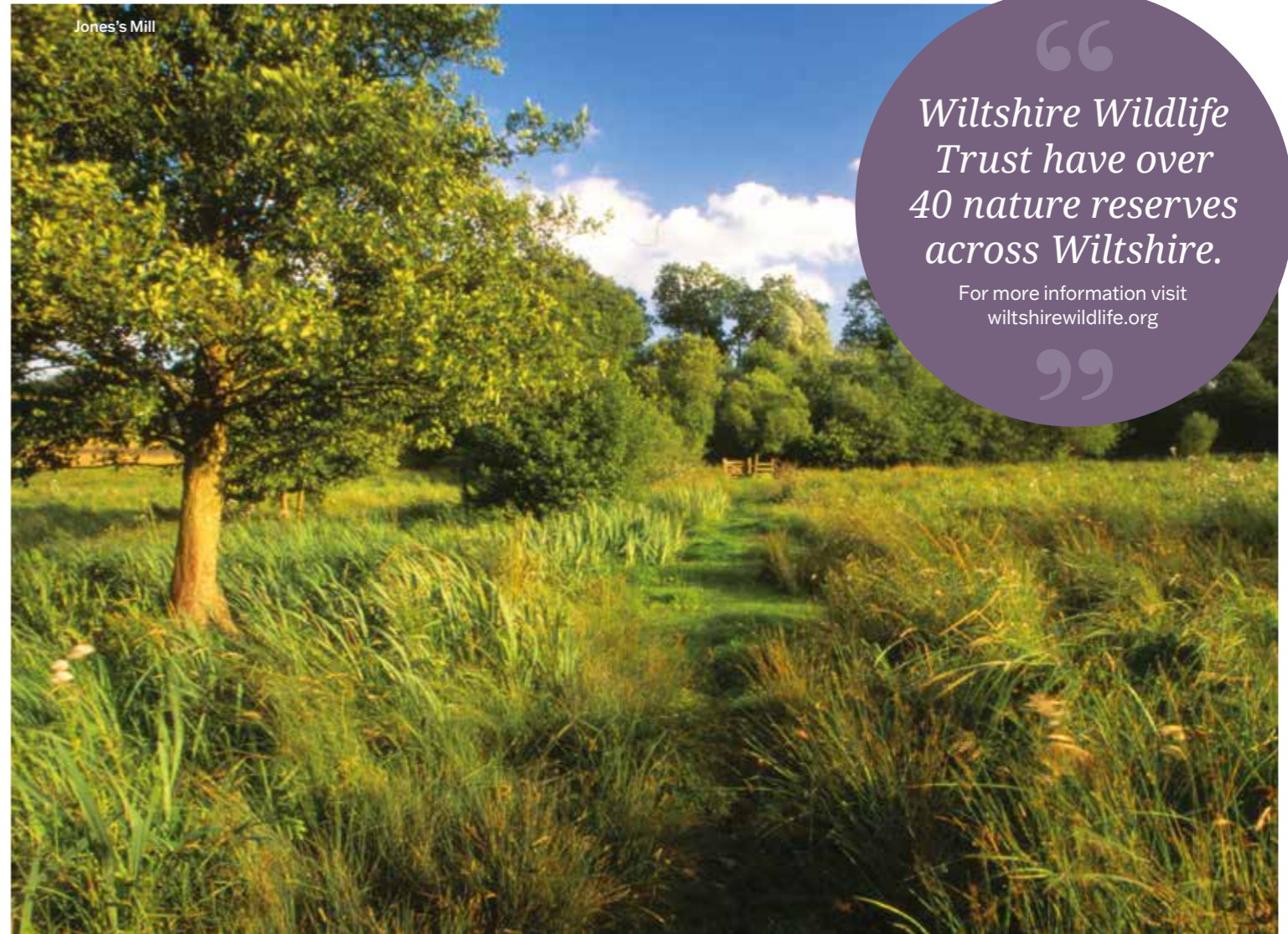
Snakeshead Fritillaries



Blakehill Farm Ox Eye Daisy



Jones's Mill Winter Tussock Sedge Plants



Jones's Mill

“  
**Wiltshire Wildlife Trust have over 40 nature reserves across Wiltshire.**  
 For more information visit [wiltshirewildlife.org](http://wiltshirewildlife.org)  
 ”

# Discover the Tranquil Beauty of Wiltshire

*An idyllic retreat from the urban hustle*

Escape the ordinary and embrace the serenity of Wiltshire. Here, amidst ever-changing landscapes and expansive skies, you'll feel a profound connection not only to the earth but to the essence of time itself.

Wiltshire embodies rural England at its pinnacle, with nearly half of its terrain designated as a **National Landscape**. Traverse the **Cotswolds**, where dry stone walls, narrow winding lanes, and honey-coloured villages seamlessly blend into rolling hills. Explore **Cranborne Chase** and the **West Wiltshire Downs**, a vast undulating expanse in the southern reaches of the county. Delight in the **North Wessex Downs** and the **Vale of Pewsey**, where lush

meadows and austere uplands converge in a nationally protected landscape. Engage in the ongoing debate about crop circles at the **Crop Circle Exhibition and Information Centre** in Honeystreet.

Ancient woodlands grace the edges of the **New Forest National Park** and **Savernake Forest**, while the untamed **Salisbury Plain** stands as a vast plateau, home to rare and endangered species thriving in its sparsely populated expanse.

Whether on foot, bicycle, or by car, Wiltshire offers miles of ancient drove roads and peaceful country lanes for effortless exploration. Stumble upon charming hamlets nestled amid unspoiled countryside, including **Castle Combe**, arguably one of England's most picturesque, and the film-favourite National Trust village of **Lacock**.

## Discover Wiltshire's Wildlife Wonders: Top 6 Reserves to Explore

Lose yourself in the natural beauty of Wiltshire, a county teeming with diverse wildlife and breathtaking landscapes. The Wiltshire Wildlife Trust manages over 40 nature reserves, each offering unique experiences and opportunities to connect with nature. Here are six of our top reserves, each with its own distinct character:

- 1. Blakehill Farm:** A haven for birds: Once a bustling World War II airfield, Blakehill Farm has transformed into a peaceful nature reserve. Its wildflower meadows and scrubland attract a variety of bird species, including skylarks, yellowhammers, and linnets. Keep an eye out for the stone curlew, a rare and iconic bird that thrives in this habitat.
- 2. Ravensroost Wood:** Ancient woodland magic: Step into the enchanting world of Ravensroost Wood, where ancient oak and beech trees create a canopy overhead. Wander through the dappled sunlight and discover a rich tapestry of wildflowers, fungi, and insects. Look for dormice, woodpeckers, and tawny owls that call this woodland home.
- 3. Langford Lakes:** A lakeside paradise: This picturesque reserve boasts a network of lakes and reedbeds providing a haven for waterfowl, dragonflies, and damselflies. Relax and enjoy the scenery from the comfortable lakeside café, offering delicious refreshments and stunning views.
- 4. Lower Moor Farm:** Wetland wonders: Explore the mosaic of habitats at Lower Moor Farm, including wet meadows, reedbeds,

and ancient hedgerows. This reserve is a haven for waders, wildfowl, and otters. Warm up with a hot drink and tasty treat at the Dragonfly café, a perfect spot for birdwatching and relaxation.

**5. Coombe Bissett Down:** Chalk downland beauty: Experience the tranquility of Coombe Bissett Down, a sprawling chalk downland reserve. Admire the carpets of wildflowers in spring and summer, and watch for butterflies, kestrels, and hares. This reserve offers panoramic views of the Wiltshire countryside, making it an ideal spot for a peaceful walk or picnic.

**6. The Devenish:** Wildflower haven: Discover a hidden gem at The Devenish, a reserve renowned for its spectacular display of wildflowers. In spring, the meadows come alive with cowslips, orchids, and oxeye daisies. This reserve is also home to a variety of butterflies, bees, and other pollinators.

**7. Morgan's Hill:** Ancient history and wildlife: Explore the fascinating history and natural beauty of Morgan's Hill. This reserve boasts ancient burial mounds, Iron Age forts, and stunning views of the surrounding countryside. Look for skylarks, meadow pipits, and adders as you wander through the grasslands and scrubland.

**Plan your visit:** For more information on these reserves and others managed by the Wiltshire Wildlife Trust, please visit our website [wiltshirewildlife.org](http://wiltshirewildlife.org). Discover the wonders of Wiltshire's wildlife and create unforgettable memories in nature.

Embark on your rural retreat and delve into the tranquility of Wiltshire. For more information and to book your escape, visit [visitwiltshire.co.uk/accommodation](http://visitwiltshire.co.uk/accommodation)





Mill Farm



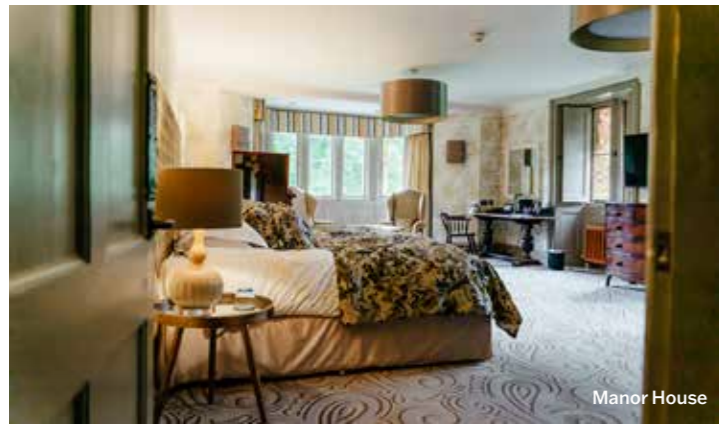
Milton Farm Hideaway



The Lobby, The Riverside Hotel



Bishopstrow Hotel



Manor House



Ridgeway



Hatts Barn, Classic Cottages



Green Hill Farm

# Sleep Soundly & Wake Refreshed

“ Sometimes, only the ultimate countryside experience will do. ”

For details of all our places to stay, as well as the latest offers, go to [visitwiltshire.co.uk/accommodation](http://visitwiltshire.co.uk/accommodation)

These days, it seems, you're always on the go. Someone's always on your case. When you need to relax and unwind, it's time for Wiltshire – the perfect antidote to busy lives and overcrowded cities.

With comfortable two, three and four star options, we have hotels to suit every pocket. Some at the centre of the action. Others peacefully rural. Several with AA Dining Rosettes. Wherever you choose to lay your head, you'll feel rested and restored. Ready for another day, out and about in Wiltshire.

At the upper end of the market our breathtaking country house hotels are the ultimate in indulgence. Excellent facilities and levels of comfort and service that are second to none. Some offer Michelin star dining. Others a luxurious spa, on-site golf course or their own riding stables. Many are surrounded by acres of beautiful English parkland. Take time out and treat yourself. No expense spared.

What could be more timeless than the English B&B experience? Cosy rooms, thatched rooves, and a hearty English breakfast featuring local produce to start the day. Make time

for each other at a perfect **bed and breakfast**, in a charming Wiltshire village.

When was the last time you all went away together? Reconnect with the family at one of our **self-catering** properties. A converted stable or barn, maybe, with inglenook fireplace and flagstone floors. Or a city centre property, with all amenities close at hand. Come and go as you please. Eat out or cater for yourself. If your thing is to do your own thing, these homes from home offer the last word in flexibility.

In Wiltshire we know that little moments matter. A crackling open fire, a comfy chair, and a glass or two of your favourite tipple. Wiltshire's **pubs and inns** have been welcoming and reviving generations of weary travellers for centuries. Our **restaurants with rooms**, too, are the perfect places to enjoy a delicious evening meal with good company all around.

For many people, holiday heaven means waking up to the sounds of the countryside. Home-made bread, local honey, and eggs straight from the hen. If this describes your rustic dream, a **Farm Stay** property could be the perfect fit. Some are on working farms, others simply in farm locations. Chances are you'll be able

to take your best friend along too, as many are happy to welcome dogs. Or even horses!

For a taste of the country life, nothing beats spending a night under a canopy of stars. Which is where our **campsites** come into their own. Just park your caravan, pitch your tent, or pull up in your motorhome and get in touch with your rural roots.

If you hanker for something a little out of the ordinary, we have plenty of quirky **alternative** and **glamping** options too. Colourful narrowboats on the canal. Well-appointed log cabins and canvas lodges. Romantic eco pods and shepherd's huts. Simple pleasures, with creature comforts and country activities thrown in. All with the great outdoors on your doorstep.

## Accessible Accommodation

Across the county, Wiltshire offers a range of accessible places to stay suitable for accessible needs. Ranging from ground-floor bedrooms and step-free access, to dedicated car parking and even unique facilities for guests who are hearing or visually impaired. Simply go to [visitwiltshire.co.uk/accommodation/accessible-accommodation](http://visitwiltshire.co.uk/accommodation/accessible-accommodation)



The Beckford Arms



Woolley Grange

## Booking your accommodation online

**Getting started is easy:** just go to [visitwiltshire.co.uk/accommodation](http://visitwiltshire.co.uk/accommodation) on your mobile, tablet or laptop and click on the 'Accommodation' tab. You can search by location and/or type of accommodation; narrow the search by adding keywords; filter by price, room type or facilities; and check availability for your preferred dates.

Once you've found somewhere you like the look of, the **next step** is to check out its full details online, as comprehensive information is provided for each property. We also highlight details of **what's nearby** – from attractions, events and activities to shopping and eating out, including distances from your chosen accommodation – and once you have made your decision you can **add it to your itinerary**.

**That's all there is to it.** Planning your short break or holiday to Wiltshire using our website couldn't be easier... look out for the **BOOK DIRECT** properties to receive the best price guaranteed. [www.visitwiltshire.co.uk/accommodation/book-direct-in-wiltshire](http://www.visitwiltshire.co.uk/accommodation/book-direct-in-wiltshire)



Westbury White Horse



### Travelling by electric car?

Find out where electric charging points are on our website.

Totteridge Farm

# Go Green in Wiltshire

*Looking for a more environmentally responsible holiday your next trip away?*

Here in Wiltshire, we've got plenty of options to help you plan a holiday with a carbon footprint in mind from the way you travel to the places you visit.

### Choose eco-friendly travel and transport

Wiltshire can easily be reached and explored using public transport. Buses or trains can bring you directly into historic and picturesque towns and villages like Salisbury, Westbury, Chippenham and Pewsey. And once you've arrived, there are many organisations that run bus tours to local attractions like Stonehenge and Avebury.

Wiltshire is largely rural and almost half of the county is designated as a National Landscape (formerly Area Of outstanding Natural Beauty), so you can also be sure to find lots of options for exploring the gorgeous countryside and quaint English villages by foot or by bike!

If you are travelling by electric car you can find out where electric charging points are on our [website](#).

### Book environmentally-friendly accommodation

Ensure your stay in Wiltshire is green by booking eco-friendly accommodation. Many local hotels, B&Bs and self-catered holiday homes are working on making their accommodation more environmentally friendly and sustainable. **Woolley Grange Hotel** are exploring new ways to become more sustainable and eco-friendlier, including having recently installed electric-car charging points.

Alternatively, take a look at one of the local glamping sites or a shepherd's hut for an off-grid holiday that will help you really get back to nature! Have a look at a whole range of places to stay in the area. Take a look at our [eco friendly places to stay](#).

### Sit down to an eco-friendly meal

The Dining Room at **Whatley Manor** here in Wiltshire is one of the first UK restaurants to be recognised with a Green Michelin Star. This new award celebrates restaurants that pioneer sustainability. You can browse through a range of restaurants, cafés and pubs offering sustainable food and drink on our [website](#).

### Enjoy sustainable, plastic-free and locally-sourced products

Trying traditional local food and drink like Cheddar cheese and West Country Cider is one of the timeless pleasures of a trip to Wiltshire. Many local pubs, cafés and restaurants pride themselves on using organic produce and sourcing their ingredients from local farms, vineyards and suppliers for the lowest possible impact on the planet. While you're in Wiltshire, why not head to one of the local farmers markets or a farm shop to pick up some local produce with a low carbon footprint?

If you're looking for sustainable cafés, restaurants and shops, the town of Bradford on Avon has recently been awarded 'Plastic-Free Community Status' by marine conservation charity Surfers Against Sewage. As part of this initiative, local businesses have committed to using biodegradable paper, re-usable straws, paper bags, and selling loose products without plastic packaging.

**Vaughan's Kitchen & Cookery School** in Devizes have recently announced that they have achieved zero food waste to landfill as

well as switching to using biodegradable and compostable food packaging.

### Support local conservation charities

While you're visiting Wiltshire, why not visit one of the attractions run by one of our local wildlife or conservation trusts? These organisations work hard to protect and support the landscapes and wildlife that make Wiltshire so special.

**Wiltshire Wildlife Trust** runs many nature reserves in the local area, all of which are open to the public and free to explore. The Trust works to create living landscapes across Wiltshire by restoring, reconnecting and recreating wildlife habitats across local landscapes. They run lots of events, including craft classes, talks and guided walks - why not book onto one of their upcoming events to support the work they do across Wiltshire?

**The Kennet & Avon Canal Trust** look after the lovely waterways of the Kennet & Avon Canal, home to wildlife such as herons, dragonflies, water voles and kingfishers. At their headquarters in Devizes, you can take a boat trip, enjoy a cup of tea in the café or visit their museum.

**The Hawk Conservancy Trust** just over the border in Hampshire supports conservation efforts to protect birds of prey. Visit the Trust for a fun family day out where you can watch spectacular flying displays while supporting the Trust's important conservation work.

# Accommodation

For map references please see page 67



Salisbury Cathedral

Crown & Anchor Inn Map Ref C4



Crown & Anchor Inn, Ham, Wiltshire, SN8 3RB  
T: 01488 503040 E: info@crowndanchorham.co.uk

Nestled in the picturesque village of Ham at the foot of the North Wessex Downs, The Crown & Anchor serves excellent locally sourced seasonal food, with a weekly menu. We have five en-suite bedrooms and a further three in the stables, ideal for weekend get aways or a treat during the week.

Our Private Dining Room - The Partridge Room can seat up to 20 people with doors that open out onto the terrace. Ideal for parties and special events. We also offer packages for corporate events. Soak up the English sun on our terrace, or sit in our wild flower garden. The team at the Crown & Anchor look forward to giving you a warm welcome.

www.crowndanchorham.co.uk

## SHORT STAY HOMES

### Holiday Homes in the South

**CLICK FOR TOUR**

**PLAY VIDEO**

Oaklund House Salisbury, Sleeps 4 for 2

Short Stay Homes own a number of high quality properties in the New Forest, Dorset, Devon and Salisbury, which are available for short lets all year round. Whether it is a 2 night break, or a longer stay, we can cater for your needs. Pets are welcome, and extra facilities like private fishing, hot tubs, shepherds huts, ev charging and stabling are available. Perfect properties for those special celebrations. Our properties sleep from 1 to 59 people in one location and up to 4 horses.

[www.shortstayhomes.co.uk](http://www.shortstayhomes.co.uk) Call 01425 517311  
[enquiries@shortstayhomes.co.uk](mailto:enquiries@shortstayhomes.co.uk)

# Accommodation

For map references please see page 67

## Marshwood Farm, Dinton

Map Ref F3

Come and enjoy peace and tranquility at Marshwood Farm, tucked between the Nadder and Wylye valleys at the heart of Cranborne Chase. Combining a relaxing farmhouse B&B, a tranquil self-catering cottage and a cosy Shepherd's Hut, our friendly working farm is just a short drive from Stonehenge, Salisbury and Longleat. Stourhead, Shaftesbury, Bath and Glastonbury are within easy reach, as are many other National Trust and English Heritage sites. While walkers and cyclists are well placed for the Monarch's Way and a variety of local walks and cycle routes.



### Bed & Breakfast

The 17<sup>th</sup> century, Grade II listed farmhouse offers two comfortable and spacious en suite rooms, each with complimentary toiletries, hospitality tray, and flat screen TV with Freeview. A delicious hot and cold breakfast of locally sourced ingredients is served each morning around the long oval table in our dining room. Continental options include organic yoghurt, fresh fruit salad, cereals, homemade preserves and local honey, while a cooked breakfast, prepared to order, offers Wiltshire-sourced chipolatas, eggs, tomatoes, mushrooms and baked beans.

**Bedrooms 2 Bathrooms 2 en suite**  
**Blue room:** child sharing from £40/night, single £80-£100/night, double/twin £100-£120/night. **Green room:** single from £80/night, double from £100/night, twin from £100/night  
 Discounts are available for stays of two nights or more, excluding bank holidays and Christmas/New Year.

Mrs Fiona Lockyer, Marshwood Farm, Dinton, Salisbury, Wiltshire, SP3 5ET T: 01722 716334 M: 07906 940894 E: marshwood1@btconnect.com

www.marshwoodfarm.co.uk



### The Cottage

Attached to the main farmhouse, our cosy, well-equipped self-catering cottage has been tastefully renovated whilst retaining many original features. It can comfortably sleep a family of four in one double bedroom and another with full size bunk beds. There is a fully fitted kitchen/dining room with dishwasher, microwave, cooker and fridge/freezer; a lounge with TV/DVD; and a family bathroom with shower over the bath. Rental includes a welcome pack of breakfast groceries, bedlinen and towels, heating and electricity, and use of a BBQ.

**Bedrooms 2 Sleeps 4**  
**Prices Weekly (Friday to Friday or Monday to Monday) £500-£720**  
**Short break (Friday to Monday or Monday to Friday) £300-£360**

Mrs Fiona Lockyer, Marshwood Farm, Dinton, Salisbury, Wiltshire, SP3 5ET T: 01722 716334 M: 07906 940894 E: marshwood1@btconnect.com

www.marshwoodfarm.co.uk



### Shepherd's Hut

Wiltshire Approved Accommodation  
 We offer 2 Shepherd's Huts each sleeping two in a double bed, surrounded by rolling landscape and ancient woodland. Our aim is to combine comfort and relaxation with being as eco-friendly as possible, so as well as a wood stove to keep you warm there is a camping stove to make tea/coffee, solar powered lights, a compost toilet and shower shack. Rental includes a breakfast hamper delivered to your door.

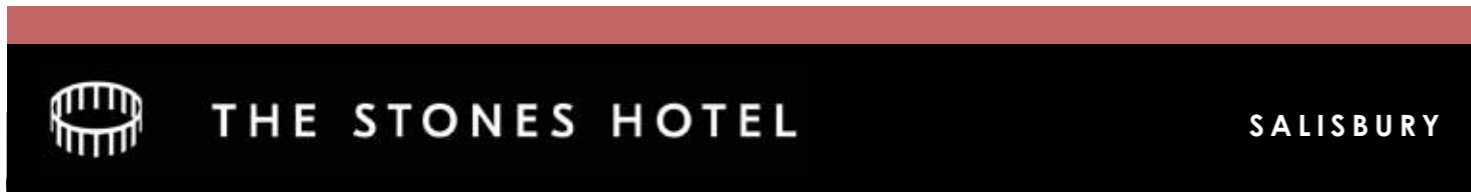
**Bedrooms 1 Sleeps 2 Prices £100/night minimum 2 night stay.**  
 Single night stay POA

Campsite with a choice of 6 pitches (bring your own tent) or 2 Bell tents sleeping up to 4 in each, just bring your bedding and you're ready to enjoy your stay.  
**3 x Bell tents** £95/night minimum 2 night stay. **Shepherds Hut** £100/night up to 2 people including breakfast minimum 2 night stay. **Tent pitches (1 tent/pitch)** £28/night for 2 people + £5/extra person/night

Bank holidays minimum 3 night stay when booking online.

Catherine Lockyer  
 T: 01722 716164 M: 07783 507112  
 E: catherine@marshwood-farm-camping.co.uk

www.marshwood-farm-camping.co.uk



- 44 Bedrooms
- Onsite coach/car parking

The Stones Hotel is located on the outskirts of the Cathedral City of Salisbury in the rolling Wiltshire landscape. A stone's throw from the World Heritage site of Stonehenge we are the perfect country side retreat. With a recent £1.5M refurbishment this stylish boutique Hotel is the perfect stop for your tour. With new luxury bedding, toiletries and revamped public spaces including a snazzy new Breakfast

Bar, we guarantee you a special stay. The Stones Hotel is rated "silver" with Green Tourism and our committed to sustaining eco-friendly and renewable resources includes offering our environmentally friendly water which has been filtered on site from the water table beneath the Hotel. We also offer onsite complimentary coach parking making your stay hassle free.

The Stones Hotel, High Post, Salisbury SP4 6AT • Email: [Preet.kalsi@thestoneshotel.co.uk](mailto:Preet.kalsi@thestoneshotel.co.uk)

Call 01722 782020 [www.thestoneshotel.co.uk](http://www.thestoneshotel.co.uk)

## Holiday Inn Salisbury - Stonehenge

Map Ref F4



Discover the incredibly bold and stylish sophistication of the closest hotel to the mystical Stonehenge. Located on the A303 in the heart of picturesque Wiltshire, England, the contemporary Holiday Inn Salisbury - Stonehenge is easily accessible from the M3 motorway, London, the Midlands and the West Country. Make the most of your stay in the modern air-conditioned comfort of our well-appointed rooms and suites. Savour mouth-watering cuisine or unwind with casual cocktails in the Solstice Bar & Grill restaurant. With onsite complimentary coach parking, we are the perfect stop for your tour.

**Bedrooms 103**  
 Onsite coach/car parking  
 Solstice Park, Near Amesbury, Mid Summer Pl, Salisbury SP4 7SQ  
 T: 0345 241 3535  
 E: [Preet.kalsi@thestoneshotel.co.uk](mailto:Preet.kalsi@thestoneshotel.co.uk)

www.ihg.com/holidayinn/hotels/gb/en/wiltshire/xsrsp/hoteldetail

## Cholderton

RARE BREEDS FARM

There's something for everyone at our Family Farm, Hostel & Vineyards

Much more THAN JUST A PETTING FARM

Animal Activities	Delicious Food	Vineyards	Feed the Animals
Family Farm Stay	Indoor Soft Play	Outdoor Space	Function Spaces

ON THE SAME SITE!  
AMESBURY ROAD,  
CHOLDERTON,  
SALISBURY,  
WILTSHIRE  
SP4 0EW

Book your tickets now!  
CHOLDERTONRAREBREEDSFARM.COM

## Stonehenge Hostel

JUST OFF THE A303

Cholderton RARE BREEDS FARM  
GUESTS GET FREE ENTRY TO THE FARM

Stonehenge Hostel  
TO BOOK OR ENQUIRE PLEASE VISIT US  
www.stonehengehostel.co.uk

SLEEPS UP TO 70 GUESTS

BOOK ONLINE OR CALL US

PERFECT FOR SOLO TRAVELLERS, FAMILIES & GROUPS  
JUST 10 MINUTES FROM STONEHENGE  
STONEHENGEHOSTEL.CO.UK

## Amesbury

Map Ref E4

Amesbury History Centre, Church Street, Amesbury, Salisbury SP4 7EU  
T: 01980 753016

A small market town that has Stonehenge (2 miles), within its Parish and nearby Durrington Woodhenge just 1.5 miles away.

Historic Amesbury is an attractive town sitting on the River Avon, now known to be the oldest continuous living settlement in this country, dating back over 8500 years BC.

In 2023 a new History Centre, complete with café and shop opened, housing one of Britain's largest Mesolithic collections, it tells an amazing story, along with much more about Amesbury's History. Amesbury has hotels, bed and breakfasts, independent shops, restaurants and inns - the town is a stopping point for travellers and visitors to Stonehenge and south Wiltshire. There is affordable parking with two coach spaces in the central car park.

Amesbury is the home of Amesbury Disc Golf Course, which can be found just off Stockport Avenue. Disc Golf, also known as frisbee golf, is a flying disc sport which players throw a disc at a target, it is played using similar to golf. The course currently consists of 18 holes tucked away behind the road, with a further extension of an additional 4 holes being added to the course in 2025. Free parking is available at the allotments and the entrance to the course is just opposite.

Stonehenge is of course the closest attraction to Amesbury and the 2 mile walk across the historic landscape is both invigorating and interesting. Just to the north is Woodhenge - a neolithic site which was first recognised through aerial photographs taken in 1925, it is an equally interesting site to visit. Closer to the town is Lord's Walk which offers the combination of a unique view of the River Avon, as well as a walk along the old Lime Tree Way, which historically led to the Abbey.

A visit to the 10th century church of St Mary and St Melor is a unique experience. Housed within is a 15th century clock that is believed to have been built for the Benedictine Abbey.

www.amesburyhistorycentre.org.uk

## Boscombe Down Aviation Collection

www.boscombedownaviationcollection.co.uk

Hangar 1 South, Old Sarum Airfield, Old Sarum Salisbury, SP4 6DZ

The Collection and gift shop are in two large 1917 WW1 hangers

Experience local aviation history from the Royal Flying Corps to modern fast jets

Visitors can sit in the pilot's seat of over 30 aircraft and Cockpits

Ongoing restorations and many artefacts can be viewed

Tel: 01722 323636

## Fisherton Mill

Map Ref F4

Fisherton Mill, 108 Fisherton Street, Salisbury, Wiltshire, SP2 7QY  
T: 01722 500200 E: admin@fishertonmill.co.uk

Enjoy great food, art and shopping at Fisherton Mill in Salisbury. This year celebrating 30 years of the award-winning Gallery Café, listed in The Good Food Guide as a 'local gem' which serves mouth-watering treats, delicious lunches, homemade cakes and an imaginative selection of drinks.

Fisherton Mill is the largest independent art gallery in the South West, displaying work by over 200 artists. With on-site boutique studios and a programme of interesting workshops, it is a creative haven just a stone's throw from Salisbury city centre.

Opening hours:  
Mon-Fri 9.30am-5pm, Sat 9.30am-5.30pm, Sun CLOSED

www.fishertonmill.co.uk

## 2025 Discover Calne

Lions Duck Race 17 May  
Calne Pride 7 June  
"Calneval" 28 June  
Town Crier Competition 19 July  
Calne Bike Meet 26 July  
Eat Calne Food Festival 30 August  
Calne Music and Arts Festival in October  
Bonfire and Fireworks 7 November  
Christmas Festival of Lights 29 November

www.calne.gov.uk

## Atwell-Wilson

Map Ref C3

Atwell-Wilson Motor Museum, Downside, Stockley Lane, Calne, SN11 0NF  
T: 01249 813119 E: enquiries@atwellwilson.org.uk

Located on and with views across the beautiful North Wessex Downs, is the only classic car Museum in Wiltshire. A charitable trust, it is run entirely by friendly and knowledgeable volunteers, who always provide a warm welcome to visitors. The cars, some unique, are from the 1920s onwards. There are also motorcycles, mopeds, bicycles, motoring memorabilia, a reconstructed 1930s style garage and a huge collection of models. Our exciting collection is constantly evolving. Come and see us. You will be very welcome! For more information visit our website.

Admission: Adults £10, Children (5-16) £4, Under 5s Free  
Opening times vary throughout the year. Please refer to our website.

www.atwellwilson.org.uk

## Bowood


A place to stay, relax & play

One of the finest Luxury Hotels in Wiltshire

Featuring a relaxing award-winning Spa, 18-hole PGA Championship Golf Course, superb dining and acres of open space, Bowood is an idyllic retreat for an escape from life. Sitting within the Bowood Estate, guests benefit from complimentary access to the stunning Bowood House & Gardens during the open season.

Find out more: www.bowood.org

Salisbury Escape Rooms Map Ref F4



11a Fisherton Street, Salisbury SP2 7SU  
T: 01722 428980 E: info@salisburyescape.com


Escape the boredom at Salisbury Escape Rooms! Immerse yourself in a world of mystery and adventure. Gather your team, solve intricate puzzles, and race against the clock to escape! Perfect for friends, family and more – an unforgettable experience awaits.

Can you beat the challenge? Book your escape now!

Please visit the website for latest updates.

[www.salisburyscape.com](http://www.salisburyscape.com)

Wilton Windmill (Near Marlborough) Map Ref D5



Wilton, Near Marlborough, SN8 3SW  
E: enquiry@wiltonwindmill.co.uk

Find out how a Victorian miller lived and how the windmill works. Built in 1821 and set high in the North Wessex Downs, this is the only working windmill in Wessex. Picnic area and site accessible all year round. Guided tours, refreshments and stone ground flour available during opening times. Fabulous walking and great views.

July 27: Windmill Open Day

Admission: A £5, Ch FREE  
Open: From Easter to end Sep, Sun and Bank Hol Mon 2pm-5pm

[www.wiltonwindmill.co.uk](http://www.wiltonwindmill.co.uk) [www.facebook.com/WiltonWindmill](https://www.facebook.com/WiltonWindmill)

## Keep up to date

Get social  
Share your Wiltshire stories using [#timeforwiltshire](https://twitter.com/VisitWiltshire)

[@VisitWiltshire](https://twitter.com/VisitWiltshire) [VisitWiltshireLtd](https://www.facebook.com/VisitWiltshireLtd) [@visitwiltshire](https://www.instagram.com/visitwiltshire) [VisitWiltshire](https://www.youtube.com/VisitWiltshire)

For news and special offers  
Sign up to our newsletter at [visitwiltshire.co.uk](http://visitwiltshire.co.uk)  
And for even more inspiration go to [visitwiltshire.co.uk/videos](http://visitwiltshire.co.uk/videos)

[visitwiltshire.co.uk](http://visitwiltshire.co.uk)

The Edington Music Festival  
A Festival of Music within the Liturgy





This year the festival runs from Sunday August 18th-25th. As the oldest festival of church music within the Liturgy in the world (first festival in 1956), it features three choirs of men, women, boys and girls drawn from the UK's best Cathedral and Collegiate choirs, four services a day including Compline by candlelight, and is FREE. The theme this year is the 12th century abbess, mystic, philosopher, feminist and composer Hildegard of Bingen. Church music from across the centuries will feature her music, and music from composers who were influenced by her cutting edge composition and philosophy at the time.

[www.edingtonfestival.org](http://www.edingtonfestival.org)

EDINGTON PRIORY CHURCH, MONASTERY ROAD, EDINGTON BA13 4QN  
Email: [info@edingtonfestival.org](mailto:info@edingtonfestival.org) Phone: 01380 831425 | 07961 345563

Crofton Beam Engines Map Ref C4




Crofton Beam Engines, Crofton, Marlborough, Wiltshire, SN8 3DW  
T: 01672 870300  
E: crofton@katrust.org.uk

We are home to two magnificent 200-year-old working steam operated beam engines still capable of performing their original job. Our amazing industrial archaeology is set in an unspoiled, rural setting overlooking the Kennet & Avon Canal. Children of all ages will love seeing the incredible engineering that helped feed the industrial revolution and the evolution of the canals in Britain. The beam engines are in steam from spring to early autumn.

Admission/Open:  
Please see website for details

[www.croftonbeamengines.org](http://www.croftonbeamengines.org)

Warminster Town Council Map Ref E2




Civic Centre, Sambourne Road, Warminster, BA12 8LB  
T: 01985 214847  
E: admin@warminster-tc.gov.uk

A historic market town with a wide variety of independent shops, cafes, restaurants, inns and listed buildings. Visit the Lake Pleasure Grounds, 100 yds from the town centre; it has something for the whole family with a splash pad, tennis courts, skatepark, café, play areas and boating lake or enjoy the nearby Smallbrook Meadows Nature Reserve.

To keep up to date on Warminster events visit: [warminster-tc.gov.uk/events](http://warminster-tc.gov.uk/events)

[www.warminster-tc.gov.uk](http://www.warminster-tc.gov.uk)

Visit Corsham



Whatever the season, Corsham has it all

Stunning heritage, glorious countryside, mouth-watering places to eat and drink, and an abundance of independent shops.

Discover Wiltshire's hidden treasure - just 8 miles from Bath and 4 miles from the M4 (J17).

[www.visit-corsham.co.uk](http://www.visit-corsham.co.uk)

GREAT WEST WAY

LARMER TREE  
Victorian Pleasure Gardens



Open for visitors from April - October  
Sunday to Wednesday, 10am to 4pm

Explore our beautiful lawns, historic follies, and peaceful woodland paths.  
The perfect spot for nature and history enthusiasts

Admission charges apply  
Please see website for further information

[www.larmertree.co.uk](http://www.larmertree.co.uk) Tollard Royal, SP5 5PT

WELCOME TO THE



REME MUSEUM

[www.rememuseum.org.uk](http://www.rememuseum.org.uk)

## REME MUSEUM

Where you will:

- Explore modern, interactive galleries
- Discover the stories and unique equipment of British Army soldiers
- Enjoy quizzes, trails and crafts
- Relax knowing we have an on-site café, playpark, gardens and free parking

**SPECIAL EVENTS:**

Wartime Britain: VE Day 80	Sci-Fi Day
REME Museum Extravaganza	Model Show
School Holiday Workshops	Christmas Fair

**CORPS CONNECTIONS**  
Exhibition open until Dec 2025

Lynham, Wiltshire, SN15 4XX  
Open Tues - Sun, 10:00 - 16:30

VisitEngland WELCOME 2023-2024  
VisitEngland GOLD 2022-23

**BOMBAY SAPPHIRE**  
Distillery

Discover the  
**Home of Bombay Sapphire**

BOOK ONLINE TODAY

[BOMBAYSAPPHIRE.COM/DISTILLERY](https://www.bombaysapphire.com/distillery)

2023 Travellers' Choice  
Tripadvisor

VisitEngland  
QUALITY ASSURED VISITOR ATTRACTION

CONSERVATION CERTIFICATION  
WILTSHP WILTSHP COUNCIL  
WHC Certified SILVER

Laverstoke Mill | Whitchurch | Hampshire | RG28 7NR

Over 100 Years of Army Aviation  
Helicopters In Action AV Show  
Army Flying Memorial

**ARMY FLYING MUSEUM**

Café  
Airfield Views

Holiday Activities  
Children's Trails  
Interactives

Pay once, visit all year!

HERITAGE FUND

[armyflying.com](https://armyflying.com) 01264 781086  
Middle Wallop, Stockbridge, Hampshire, SO20 8FB

A hidden gem, open to all.

**PLAY VIDEO**

Photographer, Antony Topham

**A church has stood on this site for nearly eight hundred years and St Thomas's has always been the church of the City and Guilds of Salisbury.**

Our recently restored 'Doom' painting above the chancel arch is the largest and most complete example still surviving in the UK, painted between 1470 and 1500.

Visitors will also enjoy the strikingly modern altar table and font, built by local craftsman Matthew Burt, and created as part of a larger and ongoing project to reorder, repair and restore this wonderful church.


**St Thomas's** is part of the Inclusive Church initiative, which means that we are committed to ensuring that all are truly welcome, whatever their story. There are services held daily (except Saturdays) – do join us if you can.

St Thomas's Church,  
St Thomas's Square SP1 1BA  
[www.stthomassalisbury.co.uk](http://www.stthomassalisbury.co.uk)  
Charity No. 1133882

Salisbury Cathedral Tower Tour

Climb up through 800 years of history and architecture to the base of the iconic Salisbury Cathedral spire and encounter breathtaking panoramic rooftop views of the city and beyond.


**BOOK YOUR TOWER TOUR: [www.salisburycathedral.org.uk](http://www.salisburycathedral.org.uk)**



**CASTLECOMBE**  
CIRCUIT

# ON AND OFF TRACK EXCITEMENT

Displays and fun for petrolheads of all ages at the West Country's Home of Motorsport



**CASTLECOMBE**  
Chippenham  
Wiltshire SN14 7EY  
T 01249 782417  
castlecombecircuit.co.uk



**Studley Grange**  
Butterfly World & Farm Park

**Butterfly House**  
Rain or shine come visit our Butterfly House in Wiltshire. Here you can walk among some of the most beautiful butterflies in the world, flying freely against a backdrop of tropical plants. Learn about the life cycle of the butterfly and see each stage within the butterfly house.

**Zoo & Farm Park**  
We have some of the world's favourite zoo animals. With lots of daily activities, there is plenty to see and do. We have encounter sessions where you can get up close and personal to a variety of animals including reptiles and bugs. Or you can book a selection of keeper experiences for that unique and special gift.

**Restaurant**  
The Garden Restaurant offers eco air conditioning, fresh meals, snacks, and tempting treats. Enjoy a must-have fresh coffee or pot of tea. Try our Studley Grange farm home reared Lamb and pork roast dinners.

**Food Hall**  
Come and fill your basket with treats from around the world. Exotic spices to homemade sausage rolls, scotch eggs and pasties. This is all complemented with a complete range of soft drinks and alcoholic beverages.

**Garden Centre**  
For all your garden needs from shrubs, flowers and ornaments to barbecues and our extensive range of garden furniture, aggregates, plant pots and tools.

**Giftware & Clothing**  
Take time to browse our extensive ranges of giftware. We have something to suit every member of your family. From scented candles, pottery and glassware to fashionable clothing and country tweeds.

[www.studleygrange.co.uk](http://www.studleygrange.co.uk) SN4 9QT



Marlborough Map Ref C4



TIC at Marlborough Town Council,  
5 High Street, Marlborough, Wiltshire, SN8 1AA  
T: 01672 512487 E: enquiries@marlborough-tc.gov.uk

The friendly, historic, beautiful market town of Marlborough on the River Kennet with its wonderfully wide, vibrant high street is bursting with charm. Close to Avebury and ancient Savernake Forest in the North Wessex Downs National Landscape, it is consistently featured as one of Britain's best independent shopping destinations and a great place to live. You'll be enchanted by its characterful buildings, sparkling river and strong cultural scene for arts, music, cinema and festivals. Explore a great range of independent shops, wide variety of places to eat or just soak up the chic café culture. If that's not enough, there are street markets twice a week too. A warm Marlborough welcome awaits you.

Follow us on Instagram @visitmarlborough & Facebook @MarlboroughTC  
[www.marlborough-tc.gov.uk/visitors](http://www.marlborough-tc.gov.uk/visitors)

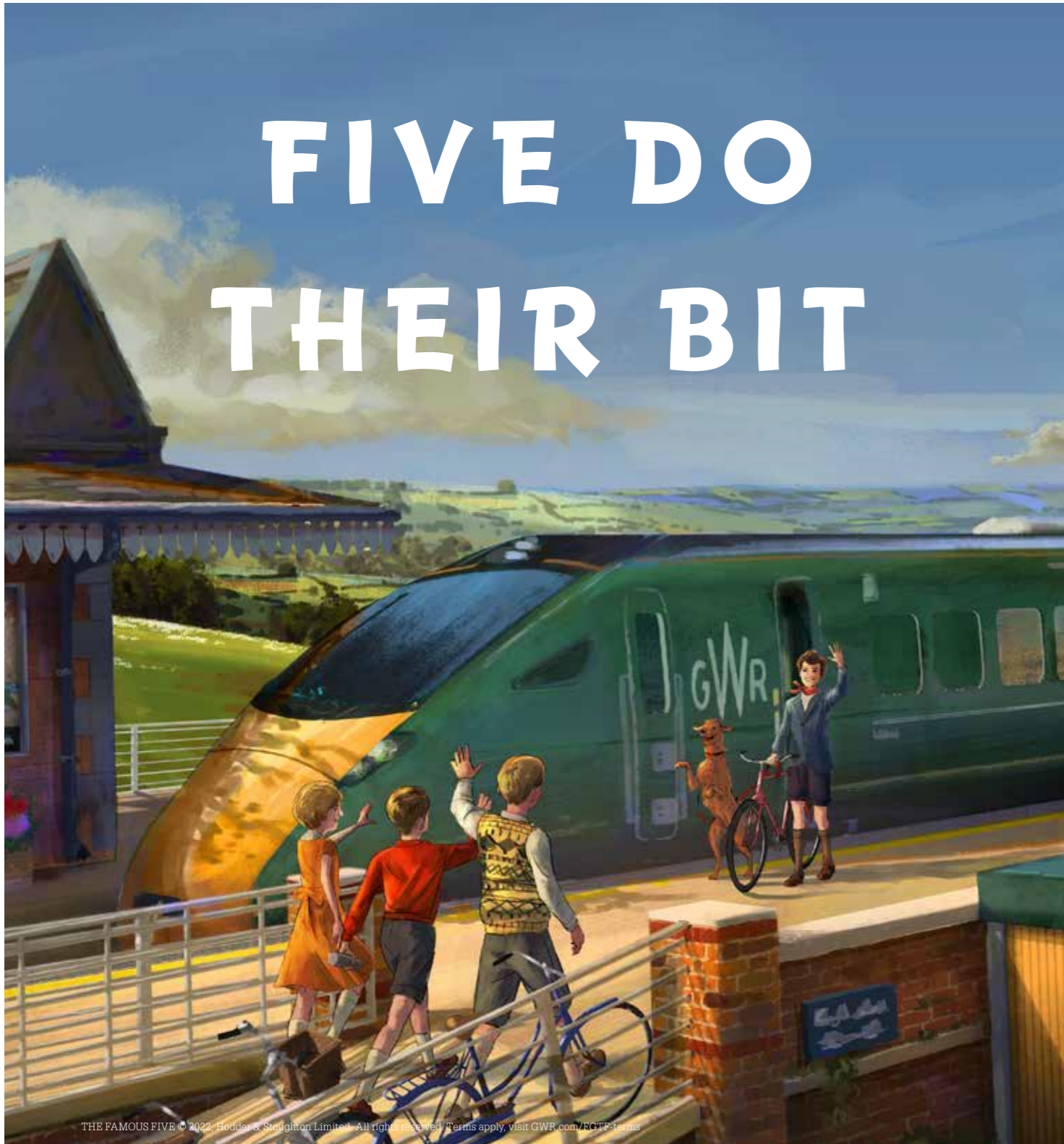
## GO WILD IN WILTSHIRE

Adventure activities for the whole family  
[www.wolt.org.uk](http://www.wolt.org.uk)



Wiltshire Outdoor Learning Team  
Challenge. Development. Education & Fun  
[www.wolt.org.uk](http://www.wolt.org.uk)

# FIVE DO THEIR BIT



THE FAMOUS FIVE © 2022, Hodder & Stoughton Limited. All rights reserved. Terms apply, visit GWR.com/FCF5-Terms

Travel the greener way to Wiltshire with GWR.  
Book now at GWR.com or on our app.



**GWR** Great Western Railway  
ADVENTURES START HERE

**Every** century.  
**Every** week.  
**Every** Tuesday and Saturday\*.

Salisbury Charter Market – since 1227  
\*Excludes the Tuesday during October's Charter Fair

For more information call 01722 342860  
salburycitycouncil.gov.uk

Brought to you by SALISBURY CITY COUNCIL

**DISCOVER PEWSEY VALE**  
ONE DAY & MULTI-DAY WALKING & CYCLING ROUTES  
IN THE HEART OF THE NORTH WESSEX DOWNS  
EAT ~ DRINK ~ SHOP ~ STAY

WALKERS ARE WELCOME

PLAY VIDEO

WWW.VISITPEWSEYVALE.CO.UK  
TRANQUIL ~ SPIRITUAL ~ ANCIENT

*Ride* THE STONEHENGE TOUR

DISCOVER THE MYSTERIES OF THE STONES

EXPERIENCE THE VISITOR CENTRE AT ENGLISH HERITAGE & BOARD THE SHUTTLE BUS UP TO THE STONES

ENJOY ONBOARD COMMENTARY AVAILABLE IN 10 LANGUAGES

CATCH THE TOUR BUS AT SALISBURY RAILWAY STATION OR CITY CENTRE

Buy tickets from the driver, online or the Salisbury Reds app

Photo - English Heritage

theStonehengeTour.info





# Stonehenge

A place of ancient mystery



Book online and save 15%

The English Heritage Trust is a charity, no. 1140351, and a limited company, no. 07447221, registered in England and Wales.



Iford Manor Gardens



A magnificent industrial heritage.

## Three days in Wiltshire

With so much to see and do ranging from gardens, museums, activities, tours we've put together some ideas for 3 days in Wiltshire.

- Trowbridge • Trowbridge Museum • Bradford on Avon • Corsham
- Malmesbury • STEAM Museum • Kennet & Avon Canal
- Crofton Beam Engines • Wilton Windmill • The Merchant's House

### DAY 1

**AM:** Arrive in Wiltshire's County town of **Trowbridge**, where 1000 years of the woollen cloth industry left a rich architectural legacy. **Trowbridge Museum** which has recently undergone an extensive renovation and expansion has a nationally important collection relating to West Country wool. After visiting the museum take some time to explore the beautiful park and the town taking in the delightful independent shops, well-known High Street outlets and a multitude of cafés, pubs and restaurants.

Travel on to **Bradford on Avon** for lunch, choose from riverside pubs to traditional tea rooms, and from cosy cafés to fine dining establishments. You'll find lots of lovely foodie options in both Bradford on Avon town centre and the surrounding villages.

In its textile production heyday, Bradford on Avon was home to more than 30 cloth factories. Today the impressive walls of Abbey Mill still flank the river, while former weavers' cottages cling to the hillside above.

**Overnight:** Bradford on Avon.

### DAY 2

Next stop **Malmesbury**. Owing its former prosperity to the wool trade, honey coloured **Corsham** makes a great stopping off point on your journey to **Malmesbury**, where you can uncover the history of fine lace making at the Athelstan Museum.

Enjoy lunch in the oldest hotel in England, situated next door to **Malmesbury Abbey, The Old Bell Hotel** and enjoy delicious, fresh, local and seasonal dishes.

In the afternoon travel on to **Swindon**, step back in time at **STEAM – Museum of the Great Western Railway**.

**Overnight:** Swindon or Devizes areas.

### DAY 3

Take to the Kennet & Avon Canal for a relaxing narrowboat trip or stroll along the towpath beside the impressive flight of locks at **Caen Hill**.

Enjoy lunch in **Devizes** or **Marlborough** area where you can find traditional Inns, cafés, coffee shops to suit your taste.

In the afternoon head to **Crofton Beam Engines** near Marlborough to discover magnificent 200-year old working steam engines. On Sundays and Bank Holiday Mondays you can also visit **Wilton Windmill** nearby. Time permitting, a visit to **The Merchant's House** in Marlborough makes a fascinating addition to your itinerary.

### Photo Credits

Adrian Brodie, Adrian Harris, Amy Murrell, Anna Stowe, Ash Mills, Calne Town Council, Charlie Ross, Chris Bailey, Chris Lock, Chris Moody, David Williams, Della Cook, Denis Photos, Emma Kirkup, English Heritage, Gary Cox, Gerardo Jaconelli, Gill Aspel, Great West Way, Iain Laing, Ioan Said, Jane Gifford, Jenny Butler, Jody Gaisford, John Newbury, Jonathan Amos, Josh Jones, Joshua Clarke, Kara Rogers, Katrina Squires, Lucy Pringle, Mammoth Screen, Mark Cooper, Marlborough Town Council, Matt Franks, Matthew Bigwood, Mike Hasted, Moongypzy, National Trust, Neville Stanikk, Nick Baumber, Nick Smith, Paul Box, Paul Chambers, Paul Groom, Paul Hope, Pete Davies, Peter Daltrey, Pete Dewhurst, Phil Sears, Phil Selby, Rob Cousins, Rebecca Hope, Salisbury Journal, Sebastian Kraus, Simon Baker, Simon Cox, Spencer Mulholland, Steven Hillier, Theresa Hopwood, Tom Bowerman, Trowbridge Town Council, VisitBritain.

# Plan Your Visit to Wiltshire

## Getting Here is Easy

Whether you are travelling by car, coach, train, air or sea, Wiltshire is easily accessible – go to [visitwiltshire.co.uk/plan-your-visit](http://visitwiltshire.co.uk/plan-your-visit) for details.

**Accessible Wiltshire** – Wiltshire’s countryside, towns and villages are here for all to enjoy, including disabled visitors and those with specific access needs. For detailed information on things to do, places to stay and ways to plan your visit to Wiltshire go to [visitwiltshire.co.uk/plan-your-visit/access-for-all](http://visitwiltshire.co.uk/plan-your-visit/access-for-all)

## Find the Perfect Place to Stay

**Plenty to choose from** – Wiltshire has a fantastic range and variety of accommodation, including stylish hotels, comfortable bed & breakfasts, well-equipped self-catering cottages, friendly campsites and quirky alternative accommodation such as glamping and shepherd’s huts.

**Special offers** – Our accommodation providers pride themselves on offering excellent value for money with a range of discounts available year-round. So keep an eye on the special offers section on our website to make sure you don’t miss a bargain.

**Quality you can trust** – All accommodation providers featured in this guide are partners of VisitWiltshire. All have been quality assessed by, or have applied for a rating from, one of the national bodies or one of their recognised agencies, or are part of one of the local schemes. For further details please visit our website: [visitwiltshire.co.uk/gradinginformation](http://visitwiltshire.co.uk/gradinginformation)

**Pricing and meal arrangements** – Unless otherwise stated, hotel and guest accommodation prices are per room, per night including breakfast; self-catering prices are per week. Breakfast is not usually included at self-catering, camping or caravanning establishments. Please be aware that prices listed within this publication are the starting prices for each establishment and may vary according to the type of room, the day of the week, or the time of the year.

**Meeting your requirements** – Please read accommodation descriptions carefully. Remember to confirm the price, facilities and cancellation policy at the time of booking, paying special attention to any aspects that are of particular importance to you. A key to the symbols, room types and abbreviations used in this guide can be found on page 65.

**How to find your accommodation** – Accommodation within this guide has been grouped according to location (eg Corsham, Lacock and Villages). Standard accommodation entries are colour coded according to the type of accommodation and have a map reference which cross-refers to the map on page 67.

**Accuracy** – Details of businesses included in this guide are based on information supplied by them at the time of going to press. Whilst every effort has been made to ensure accuracy, VisitWiltshire can accept no liability for any errors or omissions.

**Attractions** – All attractions featured throughout this publication are members of the **Wiltshire Association of Visitor Attractions**.

## General Information

This guide has been produced by VisitWiltshire. No part of this publication may be reproduced in any form without our written permission. © VisitWiltshire 2025.

## Information Centres

For information before you travel, take a look at [visitwiltshire.co.uk](http://visitwiltshire.co.uk) For local information, please contact one of the Information Centres listed below:

**Amesbury Community & Visitor Centre**  
2 Flower Court, Amesbury, SP4 7JE. Tel: 01980 622525

**Bradford on Avon Visitor Centre**  
Westbury Gardens, 50 St Margaret’s Street, Bradford on Avon, BA15 1DE. Tel: 01225 865797  
Email: [tourism@bradfordonavontowncouncil.gov.uk](mailto:tourism@bradfordonavontowncouncil.gov.uk)

**Calne Visitor and Community Information Centre**  
Bank House, The Strand, Calne, SN11 0EN.  
Tel: 01249 814000. Email: [calne@calne.gov.uk](mailto:calne@calne.gov.uk)

**Chippenham Town Council**  
High Street, Chippenham, SN15 3ER  
Tel: 01249 446699. Email: [enquiries@chippenham.gov.uk](mailto:enquiries@chippenham.gov.uk)

**Corsham Area Information Centre**  
Arnold House, 31 High Street, Corsham, SN13 0EZ  
Tel: 01249 714660. Email: [enquiries@corshamheritage.org.uk](mailto:enquiries@corshamheritage.org.uk)

**Cricklade Visitor Information Point**  
Town Council Office, Ockwells, 113 High Street, Cricklade, SN6 6AE  
Tel: 01793 751394. Email: [admin@crickladetowncouncil.gov.uk](mailto:admin@crickladetowncouncil.gov.uk)

**Devizes Visitor information** is available at a number of locations in the town, including the Kennet & Avon Canal Museum and Wiltshire Museum. Contact: Devizes Tourism Partnership c/o Wiltshire Museum, 41 Long Street, Devizes, SN10 1NS. Tel: 01380 800400  
Email: [tourism@devizes.org.uk](mailto:tourism@devizes.org.uk)

**Highworth Tourist Information**  
Arts and Craft Centre and Museum  
The Old Lloyds Bank, 7 High Street, Highworth, SN6 7BE  
Tel: 01793 764440. Email: [enquiries@visithighworth.co.uk](mailto:enquiries@visithighworth.co.uk)

**Malmesbury Tourist Information Centre**  
Town Hall, Cross Hayes, Malmesbury, SN16 9BZ  
Tel: 01666 822143. Email: [tic@malmesbury.gov.uk](mailto:tic@malmesbury.gov.uk)

**Marlborough Town Council**  
5 High Street, Marlborough, Wiltshire, SN8 1AA  
Tel: 01672 512487. Email: [enquiries@marlborough-tc.gov.uk](mailto:enquiries@marlborough-tc.gov.uk)

**Salisbury Information Centre**  
Fish Row, Salisbury, SP1 1EJ  
Tel: 01722 342860. Email: [info@salisburycitycouncil.gov.uk](mailto:info@salisburycitycouncil.gov.uk)

**Swindon Information Centre**  
Central Library, Regent Circus, Swindon, SN1 1QG  
Tel: 01793 466454. Email: [infocentre@swindon.gov.uk](mailto:infocentre@swindon.gov.uk)

**Tisbury Information Centre**  
c/o Tisbury Parish Council, The Reading Room, High Street, Tisbury, SP3 6LD. Tel: 01747 260088. Email: [tisburyipc@gmail.com](mailto:tisburyipc@gmail.com)

**Trowbridge Information Centre**  
The Civic Centre, St Stephen’s Place, Trowbridge, BA14 8AH  
Tel: 01225 765072 (Option 3). Email: [info@trowbridge.gov.uk](mailto:info@trowbridge.gov.uk)

**Vale of Pewsey**  
Look out for our Tourist Information Kiosks in red phone boxes across the Vale. Information is also available from our partner organisations, including Pewsey Heritage Centre, Wilton Windmill and Crofton Beam Engines, or wherever you see the blue Information sticker and on our website: [www.visitpewseyvale.co.uk](http://www.visitpewseyvale.co.uk)  
Contact Pewsey Vale Tourism Partnership: 07802 444022.  
[info@visitpewseyvale.co.uk](mailto:info@visitpewseyvale.co.uk)

**Warminster Community Hub**  
Central Car Park, Off Station Road, Warminster, BA12 9BT  
Tel: 01985 218548. Email: [enquiries@warminstercommunityhub.co.uk](mailto:enquiries@warminstercommunityhub.co.uk)



*It's time for...*

# Wiltshire



[visitwiltshire.co.uk](http://visitwiltshire.co.uk)